

Anti-NALP1 NLRP1 Antibody

Catalog Number: A00777

About NLRP1

NALP1 belongs to a family of cytoplasmic proteins that have been implicated in cell responses to apoptotic and inflammatory stimuli. It contains a caspase recruitment domain (CARD) in addition to a NACHT domain and leucine rich repeat (LRR). This protein interacts strongly with caspase 2 and weakly with caspase 9, as well as with Apaf-1. Transient overexpression of this gene in cultured cells was sufficient to induce apoptosis. NALP1 mRNA and protein expression levels in myeloid leukemia cells are increased following CREB (cAMP-response element binding protein) activation, suggesting that NALP1 may contribute to modulate the response of these cells to pro-inflammatory stimuli. Multiple alternatively spliced transcript variants encoding distinct isoforms have been found for NALP1.

Overview

Product Name	Anti-NALP1 NLRP1 Antibody
Reactive Species	Human
Description	Boster Bio Anti-NALP1 NLRP1 Antibody (Catalog # A00777). Tested in ELISA, WB, ICC, IF applications. This antibody reacts with Human.
Application	ELISA, IF, ICC, WB
Clonality	Polyclonal
Formulation	NALP1 Antibody is supplied in PBS containing 0.02% sodium azide.
Storage Instructions	NALP1 antibody can be stored at 4°C for three months and -20°C, stable for up to one year. Avoid repeated freeze-thaw cycles. Antibodies should not be exposed to prolonged high temperatures.
Host	Rabbit
Uniprot ID	Q9C000

Technical Details

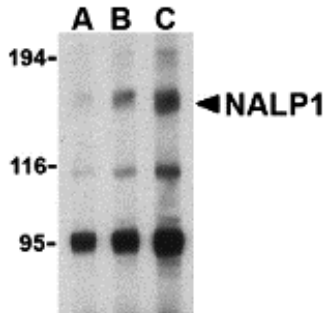
Immunogen	NALP1 antibody was raised against a peptide corresponding to 13 amino acids near the carboxy terminus of human NALP1. The immunogen is located within the last 50 amino acids of NALP1.
Predicted Reactive Species	Chicken, Goat, Pig
Isotype	IgG
Form	Liquid
Concentration	1 mg/mL
Purification	NALP1 Antibody is immunoaffinity chromatography purified IgG.

Suggested Dilutions

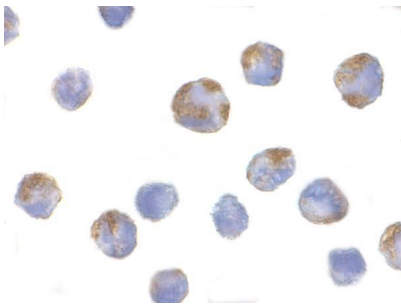
NALP1 antibody can be used for detection of NALP1 by Western blot at 1 to 4 ug/mL. Antibody can also be used for immunocytochemistry starting at 10 ug/mL. For immunofluorescence start at 20 ug/mL.

Antibody validated: Western Blot in human samples; Immunocytochemistry in human samples and Immunofluorescence in human samples. All other applications and species not yet tested. Optimal dilutions for each application should be determined by the researcher.

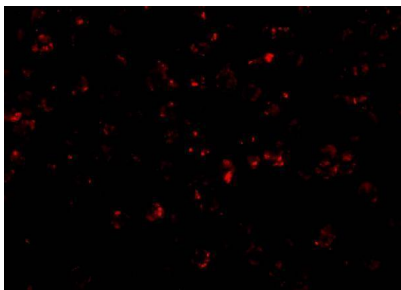
Anti-NALP1 NLRP1 Antibody (A00777) Images



Western blot analysis of NALP1 in U937 cell lysate with NALP1 antibody at (A) 1, (B) 2 and (C) 4 ug/mL.



Immunocytochemistry of NALP1 in K562 cells with NALP1 antibody at 10 ug/mL.



Immunofluorescence of NALP1 in K562 cells with NALP1 antibody at 20 ug/mL.

Submit a product review to Biocompare.com

Submit a review of this product to Biocompare.com to receive a \$20 Amazon.com giftcard! Your reviews help your fellow scientists make the right decisions. Thank you for your contribution.



Anti-NALP1 NLRP1 Antibody

For Research Use Only. Not for use in diagnostic procedures.