

Anti-PRDM16 Antibody

Catalog Number: A00782

About PRDM16

PRDM16 is a zinc finger transcription factor and contains an N-terminal PR domain. The reciprocal translocation t(1;3)(p36;q21) occurs in a subset of myelodysplastic syndrome (MDS) and acute myeloid leukemia (AML). This gene is located near the 1p36.3 breakpoint and has been shown to be specifically expressed in the t(1;3)(p36, q21)-positive MDS/AML. The translocation results in the overexpression of a truncated version of this protein that lacks the PR domain, which may play an important role in the pathogenesis of MDS and AML. Recent studies have shown that PRDM16 normally acts as a Smad3 binding protein that may be important for the development of orofacial structures through modulation of the TGF-beta signaling pathway. Other experiments have indicated that PRDM16 controls a bidirectional cell fate switch between skeletal myoblasts and brown fat cells.

Overview

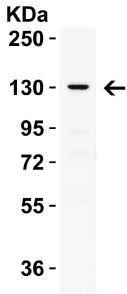
| | |
|----------------------|---|
| Product Name | Anti-PRDM16 Antibody |
| Reactive Species | Human, Mouse, Rat |
| Description | Boster Bio Anti-PRDM16 Antibody (Catalog # A00782). Tested in ELISA, WB, IHC-P, IF applications. This antibody reacts with Human, Mouse, Rat. |
| Application | ELISA, IF, IHC-P, WB |
| Clonality | Polyclonal |
| Formulation | PRDM16 Antibody is supplied in PBS containing 0.02% sodium azide. |
| Storage Instructions | PRDM16 antibody can be stored at 4°C up to one year. Antibodies should not be exposed to prolonged high temperatures. |
| Host | Rabbit |
| Uniprot ID | Q9HAZ2 |

Technical Details

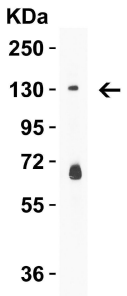
| | |
|----------------------------|---|
| Immunogen | PRDM16 antibody was raised against a 17 amino acid synthetic peptide from near the carboxy terminus of human PRDM16. The immunogen is located within amino acids 1120 - 1170 of PRDM16. |
| Predicted Reactive Species | Chicken, Goat, Pig |
| Isotype | IgG |
| Form | Liquid |
| Concentration | 1 mg/mL |

| | |
|---------------------|--|
| Purification | PRDM16 Antibody is affinity chromatography purified via peptide column. |
| Suggested Dilutions | WB: 1-4 ug/mL; IHC-P: 1-2 ug/mL; IHC-P/IF: 10-20 ug/mL. Antibody validated: Western Blot in human, mouse and rat samples; Immunohistochemistry in human, mouse, and rat samples; Immunofluorescence in the mouse sample. All other applications and species not yet tested. |

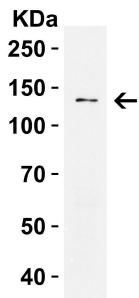
Anti-PRDM16 Antibody (A00782) Images



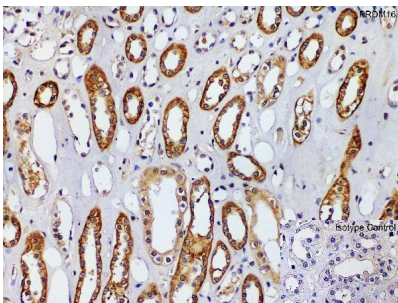
WB Validation in MCF7 Cells Loading: 15 ug of lysate
Antibodies: PRDM16, A00782, 1 u g/mL , 1 h incubation at RT in 5% NFDm/TBST. Secondary: Goat Anti-Rabbit IgG HRP conjugate at 1:10000 dilution.



WB Validation in Mouse Lung Loading: 15 ug of lysate
Antibodies: PRDM16, A00782, 2 ug/mL , 1 h incubation at RT in 5% NFDm/TBST. Secondary: Goat Anti-Rabbit IgG HRP conjugate at 1:10000 dilution.

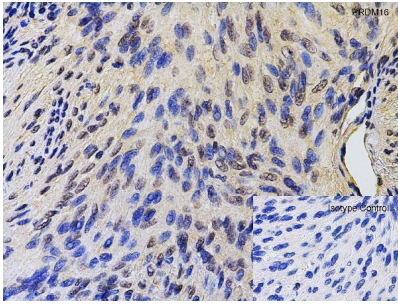


WB Validation in Rat Spleen Loading: 15 ug of lysate
Antibodies: PRDM16, A00782, 2 ug/mL , 1 h incubation at RT in 5% NFDm/TBST. Secondary: Goat Anti-Rabbit IgG HRP conjugate at 1:10000 dilution.

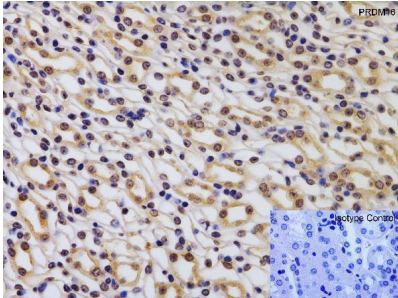


Immunohistochemistry Validation of PRDM16 in Human Kidney Immunohistochemical analysis of paraffin-embedded human kidney tissue using anti-PRDM16 antibody (A00782) at 2 ug/ml. Tissue was fixed with formaldehyde and blocked with 10% serum for 1 h at RT; antigen retrieval was by heat mediation with a citrate buffer (pH6). Samples were incubated with primary antibody overnight at 4°C. A goat anti-rabbit IgG H&L (HRP) at 1/250 was used as secondary. Counter stained with Hematoxylin.

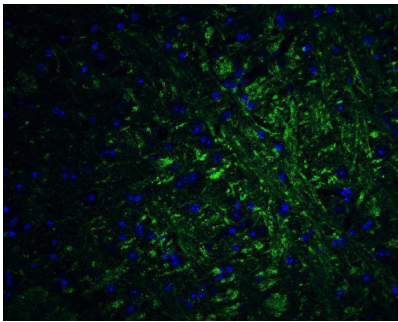
Immunohistochemistry Validation of PRDM16 in Human Brain Immunohistochemical analysis of paraffin-embedded human brain tissue using anti-PRDM16 antibody (A00782) at 2 ug/ml. Tissue was fixed with formaldehyde and blocked with 10% serum for 1 h at RT; antigen retrieval was by heat mediation with a citrate buffer (pH6). Samples were incubated with primary antibody overnight at 4°C. A goat anti-rabbit IgG H&L (HRP) at 1/250 was used as secondary.



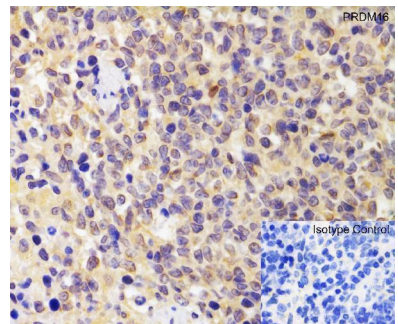
Counter stained with Hematoxylin.



Immunohistochemistry Validation of PRDM16 in Mouse Kidney
Immunohistochemical analysis of paraffin-embedded mouse kidney tissue using anti-PRDM16 antibody (A00782) at 2 ug/ml. Tissue was fixed with formaldehyde and blocked with 10% serum for 1 h at RT; antigen retrieval was by heat mediation with a citrate buffer (pH6). Samples were incubated with primary antibody overnight at 4°C. A goat anti-rabbit IgG H&L (HRP) at 1/250 was used as secondary. Counter stained with Hematoxylin.



Immunofluorescence Validation of PRDM16 in Mouse Brain
Immunofluorescent analysis of 4% paraformaldehyde-fixed mouse brain tissue labeling PRDM16 with A00782 at 20 ug/mL, followed by goat anti-rabbit IgG secondary antibody at 1/500 dilution (green) and DAPI staining (blue).



Immunohistochemistry Validation of PRDM16 in Rat Spleen
Immunohistochemical analysis of paraffin-embedded rat spleen tissue using anti-PRDM16 antibody (A00782) at 2 ug/ml. Tissue was fixed with formaldehyde and blocked with 10% serum for 1 h at RT; antigen retrieval was by heat mediation with a citrate buffer (pH6). Samples were incubated with primary antibody overnight at 4°C. A goat anti-rabbit IgG H&L (HRP) at 1/250 was used as secondary. Counter stained with Hematoxylin.

Submit a product review to [Biocompare.com](https://www.biocompare.com)

Submit a review of this product to [Biocompare.com](https://www.biocompare.com) to receive a \$20 Amazon.com giftcard! Your reviews help your fellow scientists make the right decisions. Thank you for your contribution.



Anti-PRDM16 Antibody

For Research Use Only. Not for use in diagnostic procedures.