

Anti-ER Beta (phospho-S105) ESR2 Antibody

Catalog Number: A00786S105

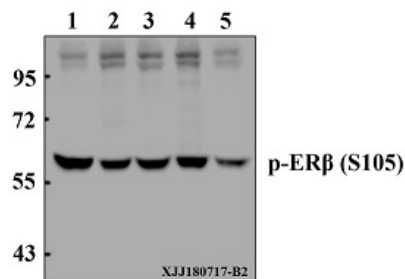
Overview

Product Name	Anti-ER Beta (phospho-S105) ESR2 Antibody
Reactive Species	Human
Description	Boster Bio Anti-ER Beta (phospho-S105) ESR2 Antibody catalog # A00786S105. Tested in WB applications. This antibody reacts with Human.
Application	WB
Clonality	Polyclonal
Formulation	Rabbit IgG, 1mg/ml in PBS with 0.02% sodium azide, 50% glycerol, pH7.2
Storage Instructions	Store at -20°C for one year. For short term storage and frequent use, store at 4°C for up to one month. Avoid repeated freeze-thaw cycles.
Host	Rabbit
Uniprot ID	Q92731

Technical Details

Immunogen	Synthetic peptide derived from human ERbeta around the phosphorylation site of S105.
Cross Reactivity	No cross reactivity with other proteins.
Isotype	IgG
Form	Liquid
Concentration	1 mg/ml
Purification	The antibody was affinity-purified from rabbit antiserum by affinity-chromatography using epitope-specific immunogen and the purity is > 95% (by SDS-PAGE).
Suggested Dilutions	WB: 1:500-1:1000

Anti-ER Beta (phospho-S105) ESR2 Antibody (A00786S105) Images



Western blot (WB) analysis of p-ERbeta (S105) pAb at 1:500 dilution Lane1:SGC7901 whole cell lysate(40µg) Lane2:SK-OVCAR3 whole cell lysate(40µg) Lane3:MCF-7 whole cell lysate(40µg) Lane4:PC3 whole cell lysate(40µg) Lane5:LO2 whole cell lysate(40µg)

Submit a product review to Biocompare.com

Submit a review of this product to Biocompare.com to receive a \$20 Amazon.com giftcard! Your reviews help your fellow scientists make the right decisions. Thank you for your contribution.



Anti-ER Beta (phospho-S105) ESR2 Antibody

For Research Use Only. Not for use in diagnostic procedures.