

Anti-Shc1 (Ab-427) Antibody

Catalog Number: A00796-2

About SHC1

Signaling adapter that couples activated growth factor receptors to signaling pathway. Isoform p46Shc and isoform p52Shc, once phosphorylated, couple activated receptor tyrosine kinases to Ras via the recruitment of the GRB2/SOS complex and are implicated in the cytoplasmic propagation of mitogenic signals. Isoform p46Shc and isoform p52Shc may thus function as initiators of the Ras signaling cascade in various non-neuronal systems. Isoform p66Shc does not mediate Ras activation, but is involved in signal transduction pathways that regulate the cellular response to oxidative stress and life span. Isoform p66Shc acts as a downstream target of the tumor suppressor p53 and is indispensable for the ability of stress-activated p53 to induce elevation of intracellular oxidants, cytochrome c release and apoptosis. The expression of isoform p66Shc has been correlated with life span

Tramont P, et al. (2006) Mol Cell Biol; 26(23): 9035-9044.

Patrussi L, et al. (2005) Oncogene; 24(13): 2218-2228

van der Geer P, et al. (1996) Curr Biol ; 6(11): 1435-1444

Overview

Product Name	Anti-Shc1 (Ab-427) Antibody
Reactive Species	Human
Description	Boster Bio Anti-Shc1 (Ab-427) Antibody (Catalog # A00796-2). Tested in WB, IHC, IF applications. This antibody reacts with Human.
Application	IF, IHC, WB
Clonality	Polyclonal
Formulation	Supplied at 1.0mg/mL in phosphate buffered saline (without Mg ²⁺ and Ca ²⁺), pH 7.4, 150mM NaCl, 0.02% sodium azide and 50% glycerol.
Storage Instructions	Store at -20°C for one year. For short term storage and frequent use, store at 4°C for up to one month. Avoid repeated freeze-thaw cycles.
Host	Rabbit
Uniprot ID	P29353

Technical Details

Immunogen	Peptide sequence around aa.425~429 (P-S-Y-V-N) derived from Human Shc1.
Predicted Reactive Species	Bovine, Mammalian
Cross Reactivity	No cross reactivity with other proteins.

Isotype	IgG
Form	Liquid
Concentration	1 mg/ml
Purification	Antibodies were produced by immunizing rabbits with synthetic peptide and KLH conjugates. Antibodies were purified by affinity-chromatography using epitope-specific peptide.
Suggested Dilutions	Predicted MW: 46 52 66kd Western blotting: 1:500~1:1000 Immunohistochemistry: 1:50~1:100 Immunofluorescence: 1:100~1:200

Anti-Shc1 (Ab-427) Antibody (A00796-2) Images

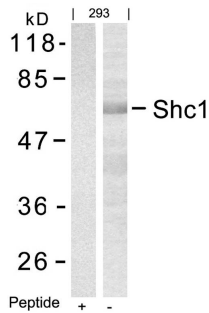
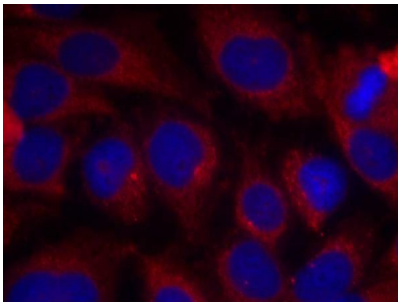


Figure 1. Western blot analysis of SHC1 using anti-SHC1 antibody (A00796-2).

Electrophoresis was performed on a 5-20% SDS-PAGE gel at 70V (Stacking gel) / 90V (Resolving gel) for 2-3 hours. The sample well of each lane was loaded with 50ug of sample under reducing conditions.

After Electrophoresis, proteins were transferred to a Nitrocellulose membrane at 150mA for 50-90 minutes. Blocked the membrane with 5% Non-fat Milk/ TBS for 1.5 hour at RT. The membrane was incubated with rabbit anti-SHC1 antigen affinity purified polyclonal antibody (Catalog # A00796-2) at 0.5 ug/mL overnight at 4°C, then washed with TBS-0.1%Tween 3 times with 5 minutes each and probed with a goat anti-Rabbit IgG-HRP secondary antibody at a dilution of 1:10000 for 1.5 hour at RT. The signal is developed using an Enhanced Chemiluminescent detection (ECL) kit (Catalog # SA1022) with Tanon 5200 system. A specific band was detected for SHC1.



Immunofluorescence staining of methanol-fixed HeLa cells using Shc1(Ab-427) Antibody #A00796-2.

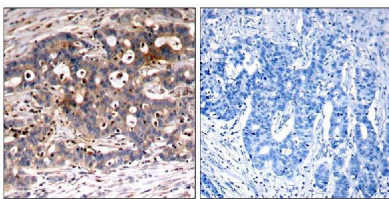


Figure 2. IHC analysis of SHC1 using anti-SHC1 antibody (A00796-2).

SHC1 was detected in paraffin-embedded section. Heat mediated antigen retrieval was performed in citrate buffer (pH6, epitope retrieval solution) for 20 mins. The tissue section was blocked with 10% goat serum. The tissue section was then incubated with 1ug/ml rabbit anti-SHC1 Antibody (A00796-2) overnight at 4°C. Biotinylated goat anti Rabbit IgG antibody was used as secondary antibody and incubated for 30 minutes at 37°C. The tissue section was developed using Streptavidin-Biotin-Complex (SABC)(Catalog # SA1022) with DAB as the chromogen.

Submit a product review to [Biocompare.com](https://www.biocompare.com)

Submit a review of this product to [Biocompare.com](https://www.biocompare.com) to receive a \$20 Amazon.com giftcard! Your reviews help your fellow scientists make the right decisions. Thank you for your contribution.

