

## Anti-Phospho-Csk (S364) Antibody

Catalog Number: A00799S364-1

### About CSK

Collagen type III occurs in most soft connective tissues along with type I collagen. Involved in regulation of cortical development. Is the major ligand of GPR56 in the developing brain and binding to GPR56 inhibits neuronal migration and activates the RhoA pathway by coupling GPR56 to GNA13 and possibly GNA12.

Arja Lamberg, J. Biol. Chem., May 1996; 271: 11988.

GW Conrad, J. Cell Biol., Mar 1980; 84: 501.

DR Keene, J. Cell Biol., Nov 1987; 105: 2393.

HM Wang, J. Histochem. Cytochem., Nov 1980; 28: 1215.

### Overview

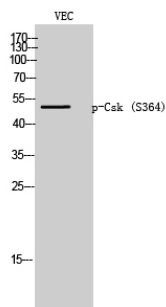
Product Name	Anti-Phospho-Csk (S364) Antibody
Reactive Species	Human, Mouse, Rat
Description	Boster Bio Anti-Phospho-Csk (S364) Antibody catalog # A00799S364-1. Tested in ELISA, IHC, WB applications. This antibody reacts with Human, Mouse, Rat.
Application	ELISA, IHC, WB
Clonality	Polyclonal
Formulation	Liquid in PBS containing 50% glycerol, 0.5% BSA and 0.02% sodium azide.
Storage Instructions	Store at -20°C for one year. For short term storage and frequent use, store at 4°C for up to one month. Avoid repeated freeze-thaw cycles.
Host	Rabbit
Uniprot ID	P41240

### Technical Details

Immunogen	The antiserum was produced against synthesized peptide derived from human Csk around the phosphorylation site of Ser364 at amino acid range 330-379
Predicted Reactive Species	Boar, Bovine, Canine, Golden Hamster
Cross Reactivity	No cross reactivity with other proteins.
Isotype	IgG
Form	Liquid

Concentration	1 mg/ml
Purification	The antibody was affinity-purified from rabbit anti-serum by affinity-chromatography.
Suggested Dilutions	<p>Dilute the sample so that the expected range of concentrations fall within the detection range of this kit.</p> <p>If the expected range of concentration is unknown, a pilot test should be conducted to decide the optimal dilution ratio for your samples.</p> <p>Some PubMed article(s) citing the expression level of this target are as follows:</p> <p>Boster Bio's internal QC testing used:</p> <p>WB 1:500-1:2000</p> <p>IHC 1:100-1:300</p> <p>ELISA 1:10000</p>

## Anti-Phospho-Csk (S364) Antibody (A00799S364-1) Images



Western blot analysis of VEC cells using Phospho-Csk (S364)  
Polyclonal Antibody

### Submit a product review to Biocompare.com

Submit a review of this product to Biocompare.com to receive a \$20 Amazon.com giftcard! Your reviews help your fellow scientists make the right decisions. Thank you for your contribution.



Anti-Phospho-Csk (S364) Antibody