

Anti-FGF21 Antibody

Catalog Number: A00802-1

About FGF21

FGF21 (Fibroblast growth factor 21) is a protein that in humans is encoded by the FGF21 gene, which is also a member of the fibroblast growth factor (FGF) family. The FGF21 gene is mapped on 19q13.33. Using RT-PCR, Fgf21 was expressed in several types of adipose tissue in mice, including subcutaneous and epididymal fat pads and brown adipose tissue. The level of Fgf21 expression in adipose tissue was comparable to that in liver. FGF21 stimulates glucose uptake in adipocytes but not in other cell types. This effect is additive to the activity of insulin. FGF21 treatment of adipocytes is associated with phosphorylation of FRS2, a protein linking FGF receptors to the Ras/MAP kinase pathway. FGF21 also protects animals from diet-induced obesity when overexpressed in transgenic mice and lowers blood glucose and triglyceride levels when administered to diabetic rodents. Changes in Fgf21 expression due to suckling or nutritional manipulations were associated with changes in circulating free fatty acid and ketone body levels. In differentiated mouse brown adipocytes in culture, Fgf21 treatment increased the expression of thermogenic genes, caused higher total and uncoupled respiration, and enhanced glucose oxidation.

Overview

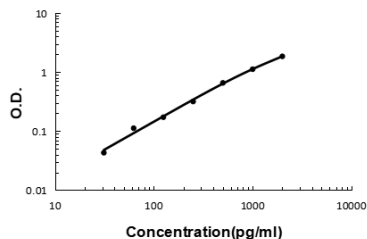
Product Name	Anti-FGF21 Antibody
Reactive Species	Human
Description	Boster Bio Anti-FGF21 Antibody catalog # A00802-1. Tested in ELISA applications. This antibody reacts with Human.
Application	ELISA (Cap)
Clonality	Polyclonal
Formulation	Each vial contains 4mg Trehalose, 0.9mg NaCl, 0.2mg Na ₂ HPO ₄ , 0.05mg NaN ₃ .
Storage Instructions	Store at -20°C for one year from date of receipt. After reconstitution, at 4°C for one month. It can also be aliquotted and stored frozen at -20°C for six months. Avoid repeated freeze-thaw cycles.
Host	Rabbit
Uniprot ID	Q9NSA1

Technical Details

Immunogen	E. coli-derived human FGF21 recombinant protein (Position: H29-S209).
Recommended Detection Systems	Boster recommends Enhanced Chemiluminescent Kit with anti-Rabbit IgG (EK1002) for Western blot, and HRP Conjugated anti-Rabbit IgG Super Vision Assay Kit (SV0002-1) for ICC.
Cross Reactivity	No cross-reactivity with other proteins.
Isotype	Rabbit IgG
Form	Lyophilized

Concentration	Adding 0.2 ml of distilled water will yield a concentration of 500 ug/ml.
Purification	Immunogen affinity purified.
Suggested Dilutions	ELISA Capture (Matched Antibody Pair), 2-8ug/ml

Anti-FGF21 Antibody (A00802-1) Images



Sandwich ELISA - Recombinant human FGF21 protein standard curve. Use in combination with reagents from Human FGF21 ELISA Kit EZ-Set (DIY Antibody Pairs) (EZ0994).

Submit a product review to Biocompare.com

Submit a review of this product to Biocompare.com to receive a \$20 Amazon.com giftcard! Your reviews help your fellow scientists make the right decisions. Thank you for your contribution.



Anti-FGF21 Antibody

For Research Use Only. Not for use in diagnostic procedures.