

## Anti-Plzf/ZBTB16 Antibody Picoband®

Catalog Number: A00817-1

### About ZBTB16

Zinc finger and BTB domain-containing protein 16 is a protein that in humans is encoded by the ZBTB16 gene. This gene is a member of the Krueppel C2H2-type zinc-finger protein family and encodes a zinc finger transcription factor that contains nine Kruppel-type zinc finger domains at the carboxyl terminus. This protein is located in the nucleus, is involved in cell cycle progression, and interacts with a histone deacetylase. Specific instances of aberrant gene rearrangement at this locus have been associated with acute promyelocytic leukemia (APL). Alternate transcriptional splice variants have been characterized.

### Overview

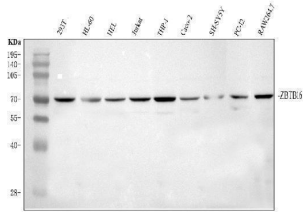
Product Name	Anti-Plzf/ZBTB16 Antibody Picoband®
Reactive Species	Human, Mouse, Rat
Description	Boster Bio Anti-Plzf/ZBTB16 Antibody Picoband® catalog # A00817-1. Tested in ELISA, Flow Cytometry, IF, ICC, WB applications. This antibody reacts with Human, Mouse, Rat. The brand Picoband indicates this is a premium antibody that guarantees superior quality, high affinity, and strong signals with minimal background in Western blot applications. Only our best-performing antibodies are designated as Picoband, ensuring unmatched performance.
Application	ELISA, Flow Cytometry, IF, ICC, WB
Clonality	Polyclonal
Formulation	Each vial contains 4mg Trehalose, 0.9mg NaCl, 0.2mg Na <sub>2</sub> HPO <sub>4</sub> , 0.01mg NaN <sub>3</sub> .
Storage Instructions	Store at -20°C for one year from date of receipt. After reconstitution, at 4°C for one month. It can also be aliquotted and stored frozen at -20°C for six months. Avoid repeated freeze-thaw cycles.
Host	Rabbit
Uniprot ID	Q05516

### Technical Details

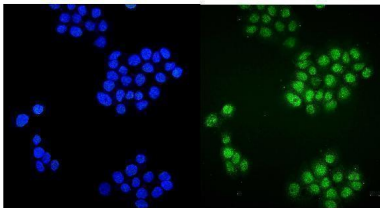
Immunogen	E.coli-derived human Plzf/ZBTB16 recombinant protein (Position: K23-V673).
Recommended Detection Systems	Boster recommends Enhanced Chemiluminescent Kit with anti-Rabbit IgG (EK1002) for Western blot, and HRP Conjugated anti-Rabbit IgG Super Vision Assay Kit (SV0002-1) for ICC.
Cross Reactivity	No cross-reactivity with other proteins.
Isotype	Rabbit IgG
Form	Lyophilized
Concentration	Adding 0.2 ml of distilled water will yield a concentration of 500 ug/ml.

Purification	Immunogen affinity purified.
Suggested Dilutions	Western blot, 0.1-0.25ug/ml, Human, Mouse, Rat Immunocytochemistry/Immunofluorescence, 5ug/ml, Human Flow Cytometry (Fixed), 1-3ug/1x10 <sup>6</sup> cells, Human ELISA, 0.1-0.5ug/ml, -

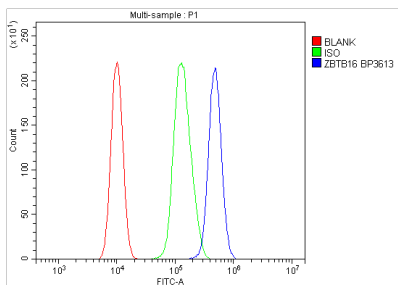
## Anti-Plzf/ZBTB16 Antibody Picoband® (A00817-1) Images



Western blot analysis of Plzf/ZBTB16 using Plzf/ZBTB16 antibody (A00817-1). Electrophoresis was performed on a 10% SDS-PAGE gel at 80V (Stacking gel) / 120V (Resolving gel) for 2 hours. The sample well of each lane was loaded with 30 ug of sample under reducing conditions. Lane 1: human 293T whole cell lysates, Lane 2: human HL-60 whole cell lysates, Lane 3: human HEL whole cell lysates, Lane 4: human Jurkat whole cell lysates, Lane 5: human THP-1 whole cell lysates, Lane 6: human CACO-2 whole cell lysates, Lane 7: human SH-SY5Y whole cell lysates, Lane 8: rat PC-12 whole cell lysates, Lane 9: mouse RAW264.7 whole cell lysates. After Electrophoresis, proteins were transferred to a Nitrocellulose membrane at 150mA for 50-90 minutes. Blocked the membrane with 5% Non-fat Milk/ TBS for 1.5 hour at RT. The membrane was incubated with rabbit anti-Plzf/ZBTB16 antigen affinity purified polyclonal antibody (Catalog # A00817-1) at 0.25 ug/mL overnight at 4°C, then washed with TBS-0.1%Tween 3 times with 5 minutes each and probed with a goat anti-rabbit IgG-HRP secondary antibody at a dilution of 1:5000 for 1.5 hour at RT. The signal is developed using an ECL Plus Western Blotting Substrate (Catalog # AR1196-200) with Tanon 5200 system. A specific band was detected for Plzf/ZBTB16 at approximately 74 kDa. The expected band size for Plzf/ZBTB16 is at 74 kDa.



IF analysis of Plzf/ZBTB16 using anti-Plzf/ZBTB16 antibody (A00817-1). Plzf/ZBTB16 was detected in immunocytochemical section of A431 cells. Enzyme antigen retrieval was performed using IHC enzyme antigen retrieval reagent (AR0022) for 15 mins. The cells were blocked with 10% goat serum. And then incubated with 5ug/mL rabbit anti-Plzf/ZBTB16 Antibody (A00817-1) overnight at 4°C. DyLight®488 Conjugated Goat Anti-Rabbit IgG (BA1127) was used as secondary antibody at 1:100 dilution and incubated for 30 minutes at 37°C. The section was counterstained with DAPI. Visualize using a fluorescence microscope and filter sets appropriate for the label used.



Flow Cytometry analysis of 293T cells using anti-Plzf/ZBTB16 antibody (A00817-1). Overlay histogram showing 293T cells stained with A00817-1 (Blue line). To facilitate intracellular staining, cells were fixed with 4% paraformaldehyde and permeabilized with permeabilization buffer. The cells were blocked with 10% normal goat serum. And then incubated with rabbit anti-Plzf/ZBTB16 Antibody (A00817-1, 1ug/1x10<sup>6</sup> cells) for 30 min at 20°C. DyLight®488 conjugated goat anti-rabbit IgG (BA1127, 5-10ug/1x10<sup>6</sup> cells) was used as secondary antibody for 30 minutes at 20°C. Isotype control antibody (Green line) was rabbit IgG (1ug/1x10<sup>6</sup>) used under the same conditions. Unlabelled sample without incubation with primary antibody and secondary antibody (Red line) was used as a blank control.

## 1 Publications Citing This Product

---

1. PubMed ID: 32216931, Shi L,Duan Y,Yao X,Song R,Ren Y.Effects of selenium on the proliferation and apoptosis of sheep spermatogonial stem cells in vitro.Anim Reprod Sci.2020 Apr;215:106330.doi:10.1016/j.anireprosci.2020.106330.Epub 2020 Feb 22.PMID:32216931.

Visit [bosterbio.com/anti-plzf-zbtb16-picoband-trade-antibody-a00817-1-boster.html](https://bosterbio.com/anti-plzf-zbtb16-picoband-trade-antibody-a00817-1-boster.html) to see all 1 publications.

## Submit a product review to Biocompare.com

---

Submit a review of this product to Biocompare.com to receive a \$20 Amazon.com giftcard! Your reviews help your fellow scientists make the right decisions. Thank you for your contribution.



Anti-Plzf/ZBTB16 Antibody

For Research Use Only. Not for use in diagnostic procedures.