

Anti-Ubiquitin-like protein ATG12 ATG12 Antibody

Catalog Number: A00820

About ATG12

Autophagy, the process of bulk degradation of cellular proteins through an autophagosomal-lysosomal pathway is important for normal growth control and may be defective in tumor cells. It is involved in the preservation of cellular nutrients under starvation conditions as well as the normal turnover of cytosolic components. This process is negatively regulated by TOR (Target of rapamycin) through phosphorylation of autophagy protein APG1. ATG12, another member of the autophagy protein family, forms a conjugate with ATG5; this conjugate has a ubiquitin-protein ligase (E3)-like activity for protein lipidation in autophagy. This conjugate also associates with innate immune response proteins such as RIG-I and VISA (also known as IPS-1), inhibiting type I interferon production and permitting viral replication in host cells. ATG12 has also been shown to interact with ATG10 in human embryonic kidney cells in the presence of ATG7. At least two isoforms of ATG12 are known to exist.

Overview

Product Name	Anti-Ubiquitin-like protein ATG12 ATG12 Antibody
Reactive Species	Human, Mouse, Rat
Description	Boster Bio Anti-Ubiquitin-like protein ATG12 ATG12 Antibody (Catalog # A00820). Tested in ELISA, WB, IHC-P, IF applications. This antibody reacts with Human, Mouse, Rat.
Application	ELISA, IF, IHC-P, WB
Clonality	Polyclonal
Formulation	ATG12 Antibody is supplied in PBS containing 0.02% sodium azide.
Storage Instructions	ATG12 antibody can be stored at 4°C for three months and -20°C, stable for up to one year. Avoid repeated freeze-thaw cycles. Antibodies should not be exposed to prolonged high temperatures.
Host	Rabbit
Uniprot ID	O94817

Technical Details

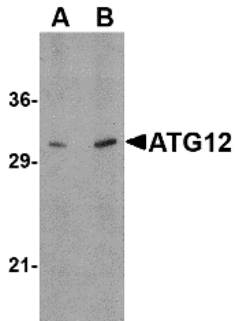
Immunogen	ATG12 antibody was raised against a 16 amino acid synthetic peptide from near the amino terminus of human ATG12. The immunogen is located within the first 50 amino acids of ATG12.
Predicted Reactive Species	Bovine
Isotype	IgG
Form	Liquid
Concentration	1 mg/mL
Purification	ATG12 Antibody is affinity chromatography purified via peptide column.

Suggested Dilutions

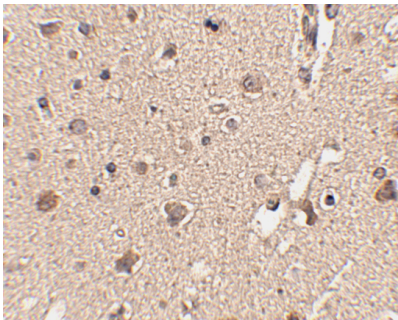
ATG12 antibody can be used for the detection of ATG10 by Western blot at 0.5 - 1 ug/mL. Antibody can also be used for immunohistochemistry starting at 2.5 ug/mL. For immunofluorescence start at 20 ug/mL.

Antibody validated: Western Blot in human samples; Immunohistochemistry in human samples and Immunofluorescence in human samples. All other applications and species not yet tested. Optimal dilutions for each application should be determined by the researcher.

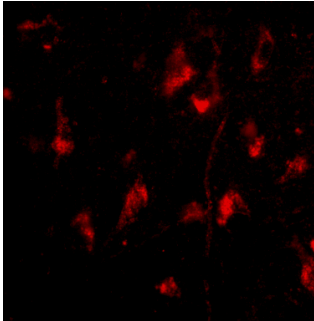
Anti-Ubiquitin-like protein ATG12 ATG12 Antibody (A00820) Images



Western blot analysis of ATG12 in human brain tissue lysate with ATG12 antibody at (A) 0.5, and (B) 1 ug/mL.



Immunohistochemistry of ATG12 in human brain tissue with ATG12 antibody at 2.5 ug/mL.



Immunofluorescence of ATG12 in Human Brain cells with ATG12 antibody at 20 ug/mL.

Submit a product review to [Biocompare.com](https://www.biocompare.com)

Submit a review of this product to [Biocompare.com](https://www.biocompare.com) to receive a \$20 Amazon.com giftcard! Your reviews help your fellow scientists make the right decisions. Thank you for your contribution.



Anti-Ubiquitin-like protein ATG12 ATG12 Antibody

For Research Use Only. Not for use in diagnostic procedures.