

Anti-PKC Delta (phospho-S645) PRKCD Antibody

Catalog Number: A00822S645

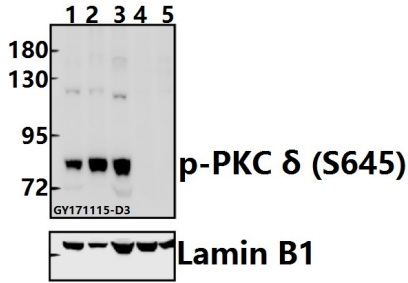
Overview

Product Name	Anti-PKC Delta (phospho-S645) PRKCD Antibody
Reactive Species	Human
Description	Boster Bio Anti-PKC Delta (phospho-S645) PRKCD Antibody catalog # A00822S645. Tested in WB,IHC applications. This antibody reacts with Human.
Application	IHC, WB
Clonality	Polyclonal
Formulation	Rabbit IgG, 1mg/ml in PBS with 0.02% sodium azide, 50% glycerol, pH7.2
Storage Instructions	Store at -20°C for one year. For short term storage and frequent use, store at 4°C for up to one month. Avoid repeated freeze-thaw cycles.
Host	Rabbit
Uniprot ID	Q05655

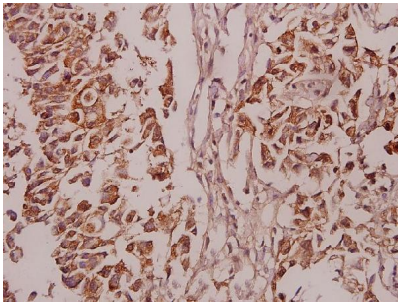
Technical Details

Immunogen	Synthetic phosphopeptide derived from human PKC delta around the phosphorylation site of Serine 645.
Cross Reactivity	No cross reactivity with other proteins.
Isotype	IgG
Form	Liquid
Concentration	1 mg/ml
Purification	The antibody was affinity-purified from rabbit antiserum by affinity-chromatography using epitope-specific immunogen and the purity is > 95% (by SDS-PAGE).
Suggested Dilutions	WB: 1:500-1:1000 IHC: 1:50-1:200

Anti-PKC Delta (phospho-S645) PRKCD Antibody (A00822S645) Images



Western blot (WB) analysis of p-PKC delta (S645) pAb at 1:500 dilution Lane1:A549 whole cell lysate(20ug) Lane2:HCT116 whole cell lysate(20ug) Lane3:SGC7901 whole cell lysate(40ug) Lane4:The Uterus tissue lysate of Mouse(40ug) Lane5:The Uterus tissue lysate of Rat(40ug)



Immunohistochemistry (IHC) analyzes of p-PKC delta (S645) pAb in paraffin-embedded human breast carcinoma tissue at 1:50.

Submit a product review to Biocompare.com

Submit a review of this product to Biocompare.com to receive a \$20 Amazon.com giftcard! Your reviews help your fellow scientists make the right decisions. Thank you for your contribution.



Anti-PKC Delta (phospho-S645) PRKCD Antibody

For Research Use Only. Not for use in diagnostic procedures.