

Anti-PKC Delta (phospho-T505) PRKCD Antibody

Catalog Number: A00822T505

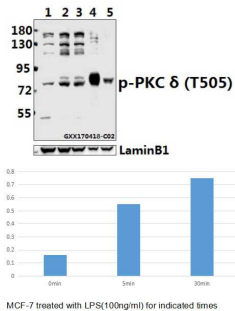
Overview

Product Name	Anti-PKC Delta (phospho-T505) PRKCD Antibody
Reactive Species	Human, Mouse, Rat
Description	Boster Bio Anti-PKC Delta (phospho-T505) PRKCD Antibody catalog # A00822T505. Tested in WB applications. This antibody reacts with Human, Mouse, Rat.
Application	WB
Clonality	Polyclonal
Formulation	Rabbit IgG, 1mg/ml in PBS with 0.02% sodium azide, 50% glycerol, pH7.2
Storage Instructions	Store at -20°C for one year. For short term storage and frequent use, store at 4°C for up to one month. Avoid repeated freeze-thaw cycles.
Host	Rabbit
Uniprot ID	Q05655

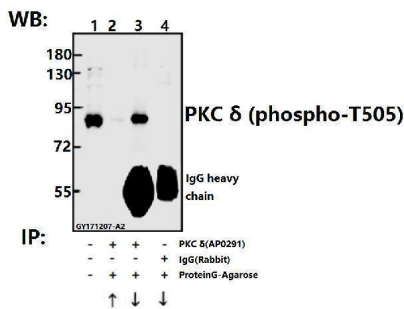
Technical Details

Immunogen	Synthetic phosphopeptide derived from human PKC delta around the phosphorylation site of Threonine 505.
Cross Reactivity	No cross reactivity with other proteins.
Isotype	IgG
Form	Liquid
Concentration	1 mg/ml
Purification	The antibody was affinity-purified from rabbit antiserum by affinity-chromatography using epitope-specific immunogen and the purity is > 97% (by SDS-PAGE).
Suggested Dilutions	WB: 1:500-1:1000

Anti-PKC Delta (phospho-T505) PRKCD Antibody (A00822T505) Images



Western blot (WB) analysis of PKC delta (phospho-T505) polyclonal antibody at 1:500 dilution Lane1:MCF-7 whole cell lysate Lane2:MCF-7 treated with LPS(100ng/ml) for 5 minutes whole cell lysate Lane3:MCF-7 treated with LPS(100ng/ml) for 30 minutes whole cell lysate Lane4:BV2 whole cell lysate(40ug) Lane5:PC12 whole cell lysate(40ug)



Immunoprecipitation of L02 cell lysate using PKC delta (phospho-T505) pAb (Sepharose Bead Conjugate) #BD0048(lane 2 and lane 3) and Nonspecific IgG Control (Sepharose Bead Conjugate)#BD0047 (lane 4) .Lane 1 is 30% input. The western blot was probed using SHP-2 (E574) pAb #AP0291. "↑" "□"supernatant; "↓" "□"deposition

Submit a product review to Biocompare.com

Submit a review of this product to Biocompare.com to receive a \$20 Amazon.com giftcard! Your reviews help your fellow scientists make the right decisions. Thank you for your contribution.



Anti-PKC Delta (phospho-T505) PRKCD Antibody

For Research Use Only. Not for use in diagnostic procedures.