

## Anti-Phospho-PKC delta (Y64) PRKCD Antibody

Catalog Number: A00822Y64

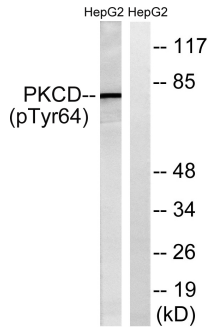
### Overview

Product Name	Anti-Phospho-PKC delta (Y64) PRKCD Antibody
Reactive Species	Human, Mouse, Rat
Description	Boster Bio Anti-Phospho-PKC delta (Y64) PRKCD Antibody catalog # A00822Y64. Tested in WB, IHC applications. This antibody reacts with Human, Mouse, Rat.
Application	IHC, WB
Clonality	Polyclonal
Formulation	Liquid in PBS containing 50% glycerol, 0.5% stabilizing protein and 0.02% sodium azide. *This antibody is supplied in a stabilized formulation. Compatibility with conjugation reactions depends on the chemistry of the conjugation method used. For conjugation methods that are not compatible with the stabilizing components present in this formulation, a carrier-free antibody format is required.
Storage Instructions	Store at -20°C for one year. For short term storage and frequent use, store at 4°C for up to one month. Avoid repeated freeze-thaw cycles.
Host	Rabbit
Uniprot ID	Q05655

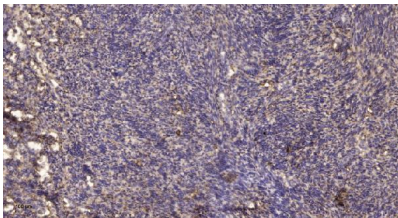
### Technical Details

Immunogen	The antiserum was produced against synthesized peptide derived from human PKCD around the phosphorylation site of Tyr64. AA range:30-79
Cross Reactivity	No cross reactivity with other proteins.
Isotype	IgG
Form	Liquid
Concentration	1 mg/ml
Purification	The antibody was affinity-purified from rabbit antiserum by affinity-chromatography using epitope-specific immunogen.
Suggested Dilutions	WB 1:500-2000 IHC 1:50-300

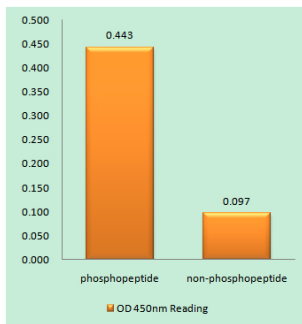
## Anti-Phospho-PKC delta (Y64) PRKCD Antibody (A00822Y64) Images



Western blot analysis of lysates from HepG2 cells treated with PMA 125ng/ml 30', using PKCD (Phospho-Tyr64) Antibody. The lane on the right is blocked with the phospho peptide.



Immunohistochemical analysis of paraffin-embedded human uterus. 1, Antibody was diluted at 1:200 (4° overnight). 2, Tris-EDTA, pH9.0 was used for antigen retrieval. 3, Secondary antibody was diluted at 1:200 (room temperature, 45min).



Enzyme-Linked Immunosorbent Assay (Phospho-ELISA) for Immunogen Phosphopeptide (Phospho-left) and Non-Phosphopeptide (Phospho-right), using PKCD (Phospho-Tyr64) Antibody

### Submit a product review to Biocompare.com

Submit a review of this product to Biocompare.com to receive a \$20 Amazon.com giftcard! Your reviews help your fellow scientists make the right decisions. Thank you for your contribution.



Anti-Phospho-PKC delta (Y64) PRKCD Antibody

For Research Use Only. Not for use in diagnostic procedures.