

## Anti-RPE65 antibody

Catalog Number: A00824-1

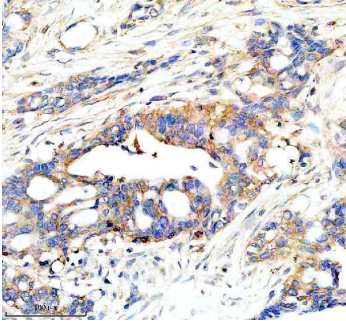
### Overview

Product Name	Anti-RPE65 antibody
Reactive Species	Human, Mouse, Rat
Description	Boster Bio Anti-RPE65 antibody catalog # A00824-1. Tested in IHC, WB, IF, ELISA applications. This antibody reacts with Human, Mouse, Rat.
Application	ELISA, IF, IHC, WB
Clonality	Polyclonal
Formulation	500 ug/ml antibody with PBS, 0.02% NaN <sub>3</sub> , 1 mg stabilizing protein and 50% glycerol *This antibody is supplied in a stabilized formulation. Compatibility with conjugation reactions depends on the chemistry of the conjugation method used. For conjugation methods that are not compatible with the stabilizing components present in this formulation, a carrier-free antibody format is required.
Storage Instructions	12 months from date of receipt at -20°C as supplied. 6 months at 2 to 8°C after reconstitution. Avoid repeated freezing and thawing.
Host	Rabbit
Uniprot ID	Q16518

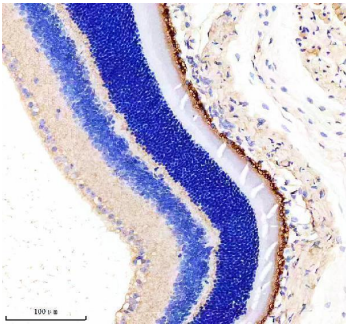
### Technical Details

Immunogen	E.coli-derived human RPE65 recombinant protein (Position: V207-S533)
Form	Liquid
Concentration	500 ug/ml
Purification	Immunogen affinity purified.
Suggested Dilutions	Western blot, 1:500-2000 Immunohistochemistry, 1:50-400 Immunofluorescence, 1:50-400 ELISA, 1:100-1000

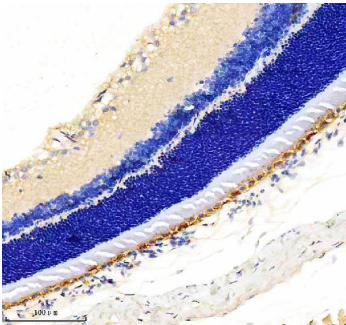
## Anti-RPE65 antibody (A00824-1) Images



IHC analysis of RPE65 using anti-RPE65 antibody (A00824-1). RPE65 was detected in a paraffin-embedded section of human pancreas cancer tissue. Heat mediated antigen retrieval was performed in EDTA buffer (pH 8.0, epitope retrieval solution). The tissue section was blocked with 10% goat serum. The tissue section was then incubated with 1:100 rabbit anti-RPE65 Antibody (A00824-1) overnight at 4°C. Peroxidase Conjugated Goat Anti-rabbit IgG was used as secondary antibody and incubated for 30 minutes at 37°C. The tissue section was developed using HRP Conjugated Rabbit IgG Super Vision Assay Kit (Catalog # SV0002) with DAB as the chromogen.



IHC analysis of RPE65 using anti-RPE65 antibody (A00824-1). RPE65 was detected in a paraffin-embedded section of mouse eye tissue. Heat mediated antigen retrieval was performed in EDTA buffer (pH 8.0, epitope retrieval solution). The tissue section was blocked with 10% goat serum. The tissue section was then incubated with 1:100 rabbit anti-RPE65 Antibody (A00824-1) overnight at 4°C. Peroxidase Conjugated Goat Anti-rabbit IgG was used as secondary antibody and incubated for 30 minutes at 37°C. The tissue section was developed using HRP Conjugated Rabbit IgG Super Vision Assay Kit (Catalog # SV0002) with DAB as the chromogen.



IHC analysis of RPE65 using anti-RPE65 antibody (A00824-1). RPE65 was detected in a paraffin-embedded section of rat eye tissue. Heat mediated antigen retrieval was performed in EDTA buffer (pH 8.0, epitope retrieval solution). The tissue section was blocked with 10% goat serum. The tissue section was then incubated with 1:100 rabbit anti-RPE65 Antibody (A00824-1) overnight at 4°C. Peroxidase Conjugated Goat Anti-rabbit IgG was used as secondary antibody and incubated for 30 minutes at 37°C. The tissue section was developed using HRP Conjugated Rabbit IgG Super Vision Assay Kit (Catalog # SV0002) with DAB as the chromogen.

### Submit a product review to Biocompare.com

Submit a review of this product to Biocompare.com to receive a \$20 Amazon.com giftcard! Your reviews help your fellow scientists make the right decisions. Thank you for your contribution.



Anti-RPE65 antibody

For Research Use Only. Not for use in diagnostic procedures.