

Anti-GTP-binding protein Rheb Rheb Antibody

Catalog Number: A00827

About RHEB

Rheb (Ras homolog enriched in brain) is an evolutionarily conserved member of the Ras family of small GTP-binding proteins originally found to be rapidly induced by synaptic activity in the hippocampus following seizure. While it is expressed at relatively high levels in the brain, Rheb is widely expressed in other tissues and may be induced by growth factor stimulation. Similar to other family members, Rheb triggers activation of the Raf-MEK-MAPK pathway. Biochemical and genetic studies demonstrate that Rheb has an important role in regulating the insulin/Target of rapamycin (TOR) signaling pathway. TOR is a serine/threonine protein kinase that acts as a sensor for ATP and amino acids, balancing the availability of nutrients with protein translation and cell growth. A dimeric protein complex termed TSC1/TSC2 indirectly inhibits TOR activity by inhibiting Rheb via the GAP activity of TSC2.

Overview

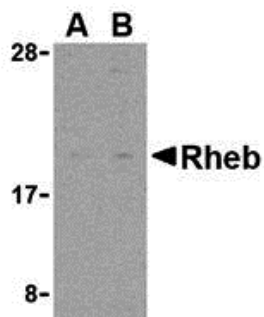
Product Name	Anti-GTP-binding protein Rheb Rheb Antibody
Reactive Species	Human, Mouse, Rat
Description	Boster Bio Anti-GTP-binding protein Rheb Rheb Antibody (Catalog # A00827). Tested in ELISA, WB applications. This antibody reacts with Human, Mouse, Rat.
Application	ELISA, WB
Clonality	Polyclonal
Formulation	Rheb Antibody is supplied in PBS containing 0.02% sodium azide.
Storage Instructions	Rheb antibody can be stored at 4°C for three months and -20°C, stable for up to one year. Avoid repeated freeze-thaw cycles. Antibodies should not be exposed to prolonged high temperatures.
Host	Rabbit
Uniprot ID	Q15382

Technical Details

Immunogen	Rabbit Rheb polyclonal antibody was raised against a 14 amino acid synthetic peptide from the amino terminus of human Rheb. The immunogen is located within the first 50 amino acids of Rheb.
Predicted Reactive Species	Bovine
Cross Reactivity	Post-translationally modified Rheb is sometimes observed at higher molecular weight.
Isotype	IgG
Form	Liquid
Concentration	1 mg/mL

Purification	Rheb Antibody is affinity chromatography purified via peptide column.
Suggested Dilutions	Rheb antibody can be used for the detection of Rheb by Western blot at 2 and 4 ug/mL. Antibody validated: Western Blot in rat samples. All other applications and species not yet tested. Optimal dilutions for each application should be determined by the researcher.

Anti-GTP-binding protein Rheb Rheb Antibody (A00827) Images



Western blot analysis of Rheb in rat heart cell lysate with Rheb antibody at (A) 2 and (B) 4 ug/mL.

Submit a product review to Biocompare.com

Submit a review of this product to Biocompare.com to receive a \$20 Amazon.com giftcard! Your reviews help your fellow scientists make the right decisions. Thank you for your contribution.



Anti-GTP-binding protein Rheb Rheb Antibody

For Research Use Only. Not for use in diagnostic procedures.