

## Anti-NEDD8 LRP1 Antibody

Catalog Number: A00829-1

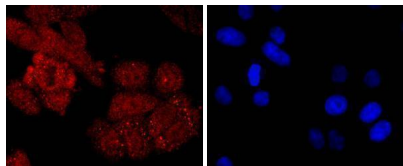
### Overview

Product Name	Anti-NEDD8 LRP1 Antibody
Reactive Species	Human, Mouse, Rat
Description	Boster Bio Anti-NEDD8 LRP1 Antibody catalog # A00829-1. Tested in WB,ICC/IF,IHC,IP applications. This antibody reacts with Human,Mouse,Rat.
Application	IP, IF, IHC, ICC, WB
Clonality	Polyclonal
Formulation	Rabbit IgG, 1mg/ml in PBS with 0.02% sodium azide, 50% glycerol, pH7.2
Storage Instructions	Store at -20°C for one year. For short term storage and frequent use, store at 4°C for up to one month. Avoid repeated freeze-thaw cycles.
Host	Rabbit
Uniprot ID	Q07954

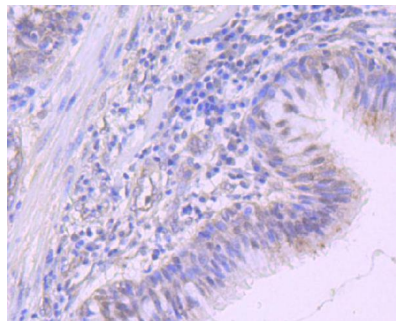
### Technical Details

Immunogen	recombinant protein
Cross Reactivity	No cross reactivity with other proteins.
Isotype	IgG
Form	Liquid
Concentration	1 mg/ml
Purification	ProA affinity purified
Suggested Dilutions	WB: 1:500-1:1,000 ICC: 1:50-1:200 IHC: 1:50-1:100 IP: 1:50

## Anti-NEDD8 LRP1 Antibody (A00829-1) Images



ICC staining NEDD8 in HepG2 cells (red). The nuclear counter stain is DAPI (blue). Cells were fixed in paraformaldehyde, permeabilised with 0.25% Triton X100/PBS.



Immunohistochemical analysis of paraffin-embedded human lung cancer tissue using anti-NEDD8 antibody. Counter stained with hematoxylin.

### Submit a product review to [Biocompare.com](https://www.biocompare.com)

Submit a review of this product to [Biocompare.com](https://www.biocompare.com) to receive a \$20 Amazon.com giftcard! Your reviews help your fellow scientists make the right decisions. Thank you for your contribution.



Anti-NEDD8 LRP1 Antibody

For Research Use Only. Not for use in diagnostic procedures.