

Anti-eIF4B(Ab-422) Antibody

Catalog Number: A00846

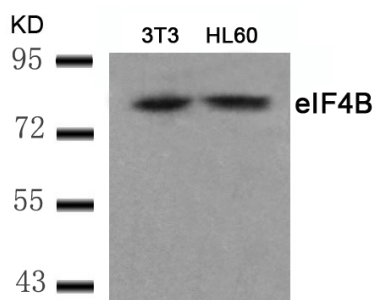
Overview

| | |
|----------------------|--|
| Product Name | Anti-eIF4B(Ab-422) Antibody |
| Reactive Species | Human, Mouse, Rat |
| Description | Boster Bio Anti-eIF4B (Ab-422) Antibody catalog # A00846. Tested in IHC, WB applications. This antibody reacts with Human, Mouse, Rat. |
| Application | IHC, WB |
| Clonality | Polyclonal |
| Formulation | Supplied at 1.0mg/mL in phosphate buffered saline (without Mg ²⁺ and Ca ²⁺), pH 7.4, 150mM NaCl, 0.02% sodium azide and 50% glycerol. |
| Storage Instructions | Store at -20°C for one year. For short term storage and frequent use, store at 4°C for up to one month. Avoid repeated freeze-thaw cycles. |
| Host | Rabbit |
| Uniprot ID | P23588 |

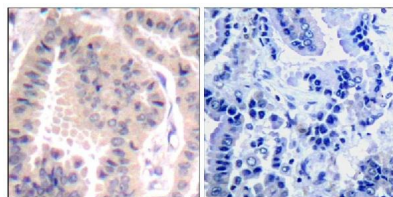
Technical Details

| | |
|---------------------|---|
| Immunogen | Peptide sequence around aa.420~424 (T-G-S-E-S) derived from Human eIF4B. |
| Form | Liquid |
| Concentration | 0.5-1mg/ml, actual concentration vary by lot. Use suggested dilution ratio to decide dilution procedure. |
| Purification | Immunogen affinity purified |
| Suggested Dilutions | Dilute the sample so that the expected range of concentrations fall within the detection range of this kit. If the expected range of concentration is unknown, a pilot test should be conducted to decide the optimal dilution ratio for your samples. Some PubMed article(s) citing the expression level of this target are as follows: Boster Bio's internal QC testing used WB, 1:500-1:1000 IHC, 1:50-1:100 |

Anti-eIF4B(Ab-422) Antibody (A00846) Images



Western blot analysis of extracts from 3T3 and HL60 cells using eIF4B(Ab-422) antibody A00846.



Immunohistochemical analysis of paraffin-embedded human lung carcinoma tissue using eIF4B(Ab-422) antibody A00846(left) or the same antibody preincubated with blocking peptide(right).

Submit a product review to Biocompare.com

Submit a review of this product to Biocompare.com to receive a \$20 Amazon giftcard! Your reviews help your fellow scientists make the right decisions. Thank you for your contribution.



Anti-eIF4B(Ab-422) Antibody