

## Anti-Lgi1/EPT/LGI1 Antibody Picoband®

Catalog Number: A00850-1

### About LGI1

Leucine-rich, glioma inactivated 1, also known as LGI1, is a protein which in humans is encoded by the LGI1 gene. This gene encodes a member of the secreted leucine-rich repeat (LRR) superfamily and shares homology with members of the SLIT protein family. The encoded protein may regulate the activity of voltage-gated potassium channels and may be involved in neuronal growth regulation and cell survival. This gene is rearranged as a result of translocations in glioblastoma cell lines, and it is frequently down-regulated or rearranged in malignant gliomas. Mutations in this gene result in autosomal dominant lateral temporal epilepsy. Alternative splicing results in multiple transcript variants.

### Overview

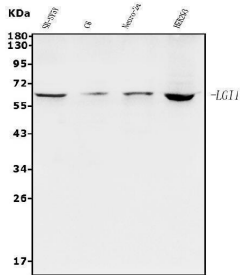
Product Name	Anti-Lgi1/EPT/LGI1 Antibody Picoband®
Reactive Species	Human, Mouse, Rat
Description	Boster Bio Anti-Lgi1/EPT/LGI1 Antibody Picoband® catalog # A00850-1. Tested in ELISA, Flow Cytometry, WB applications. This antibody reacts with Human, Mouse, Rat. The brand Picoband indicates this is a premium antibody that guarantees superior quality, high affinity, and strong signals with minimal background in Western blot applications. Only our best-performing antibodies are designated as Picoband, ensuring unmatched performance.
Application	ELISA, Flow Cytometry, WB
Clonality	Polyclonal
Formulation	Each vial contains 4mg Trehalose, 0.9mg NaCl, 0.2mg Na <sub>2</sub> HPO <sub>4</sub> , 0.01mg NaN <sub>3</sub> .
Storage Instructions	Store at -20°C for one year from date of receipt. After reconstitution, at 4°C for one month. It can also be aliquotted and stored frozen at -20°C for six months. Avoid repeated freeze-thaw cycles.
Host	Rabbit
Uniprot ID	O95970

### Technical Details

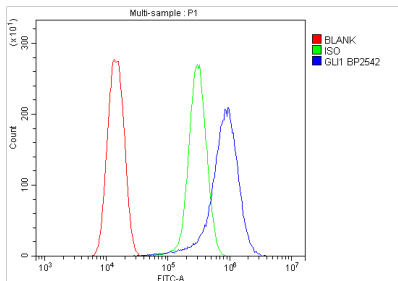
Immunogen	E.coli-derived human Lgi1/EPT/LGI1 recombinant protein (Position: K35-A557).
Recommended Detection Systems	Boster recommends Enhanced Chemiluminescent Kit with anti-Rabbit IgG (EK1002) for Western blot.
Cross Reactivity	No cross-reactivity with other proteins.
Isotype	Rabbit IgG
Form	Lyophilized
Concentration	Adding 0.2 ml of distilled water will yield a concentration of 500 ug/ml.

Purification	Immunogen affinity purified.
Suggested Dilutions	Western blot, 0.25-0.5ug/ml, Human, Mouse, Rat Flow Cytometry (Fixed), 1-3ug/1x10 <sup>6</sup> cells, Human ELISA, 0.1-0.5ug/ml, -

## Anti-Lgi1/EPT/LGI1 Antibody Picoband® (A00850-1) Images



Western blot analysis of Lgi1/EPT/LGI1 using anti-Lgi1/EPT/LGI1 antibody (A00850-1). Electrophoresis was performed on a 5-20% SDS-PAGE gel at 70V (Stacking gel) / 90V (Resolving gel) for 2-3 hours. The sample well of each lane was loaded with 50ug of sample under reducing conditions. Lane 1: human SH-SY5Y whole cell lysates, Lane 2: rat C6 whole cell lysates, Lane 3: mouse Neuro-2a whole cell lysates, Lane 4: human HEK293 whole cell lysates. After Electrophoresis, proteins were transferred to a Nitrocellulose membrane at 150mA for 50-90 minutes. Blocked the membrane with 5% Non-fat Milk/ TBS for 1.5 hour at RT. The membrane was incubated with rabbit anti-Lgi1/EPT/LGI1 antigen affinity purified polyclonal antibody (Catalog # A00850-1) at 0.5 ug/mL overnight at 4°C, then washed with TBS-0.1%Tween 3 times with 5 minutes each and probed with a goat anti-rabbit IgG-HRP secondary antibody at a dilution of 1:5000 for 1.5 hour at RT. The signal is developed using an Enhanced Chemiluminescent detection (ECL) kit (Catalog # EK1002) with Tanon 5200 system. A specific band was detected for Lgi1/EPT/LGI1 at approximately 64KD. The expected band size for Lgi1/EPT/LGI1 is at 64KD.



Flow Cytometry analysis of U2OS cells using anti-Lgi1/EPT/LGI1 antibody (A00850-1). Overlay histogram showing U2OS cells stained with A00850-1 (Blue line). The cells were fixed with 4% paraformaldehyde and blocked with 10% normal goat serum. And then incubated with rabbit anti-Lgi1/EPT/LGI1 Antibody (A00850-1, 1ug/1x10<sup>6</sup> cells) for 30 min at 20°C. DyLight®488 conjugated goat anti-rabbit IgG (BA1127, 5-10ug/1x10<sup>6</sup> cells) was used as secondary antibody for 30 minutes at 20°C. Isotype control antibody (Green line) was rabbit IgG (1ug/1x10<sup>6</sup>) used under the same conditions. Unlabelled sample without incubation with primary antibody and secondary antibody (Red line) was used as a blank control.

### Submit a product review to [Biocompare.com](https://www.biocompare.com)

Submit a review of this product to [Biocompare.com](https://www.biocompare.com) to receive a \$20 Amazon.com giftcard! Your reviews help your fellow scientists make the right decisions. Thank you for your contribution.



### Anti-Lgi1/EPT/LGI1 Antibody

For Research Use Only. Not for use in diagnostic procedures.