

## Anti-Cytochrome P450 2B6 CYP2B6 Antibody

Catalog Number: A00861-3

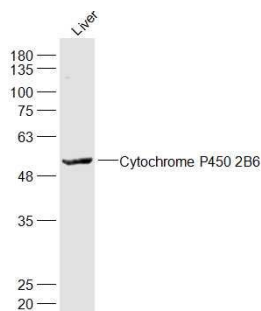
### Overview

Product Name	Anti-Cytochrome P450 2B6 CYP2B6 Antibody
Reactive Species	Human, Mouse
Description	Boster Bio Anti-Cytochrome P450 2B6 CYP2B6 Antibody catalog # A00861-3. Tested in WB,ELISA,IHC,IF applications. This antibody reacts with Human,Mouse.
Application	ELISA, IF, IHC, WB
Clonality	Polyclonal
Formulation	Rabbit IgG, 1mg/ml in PBS with 0.02% sodium azide, 50% glycerol, pH7.2
Storage Instructions	Store at -20°C for one year. For short term storage and frequent use, store at 4°C for up to one month. Avoid repeated freeze-thaw cycles.
Host	Rabbit
Uniprot ID	P20813

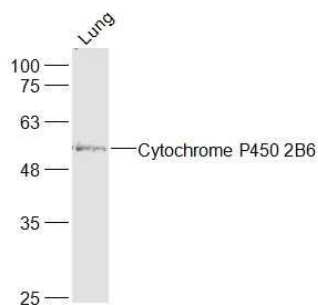
### Technical Details

Immunogen	KLH conjugated synthetic peptide derived from human Cytochrome P450 2B6:401-491/491
Cross Reactivity	No cross reactivity with other proteins.
Isotype	IgG
Form	Liquid
Concentration	1 mg/ml
Purification	The antibody was affinity-purified from rabbit antiserum by affinity-chromatography using epitope-specific immunogen and the purity is > 95% (by SDS-PAGE).
Suggested Dilutions	WB: 1:500-2000 ELISA: 1:5000-10000 IHC: 1:100-500 IF: 1:100-500

## Anti-Cytochrome P450 2B6 CYP2B6 Antibody (A00861-3) Images



Sample: Liver (Mouse) Lysate at 40 ug Primary: Anti-Cytochrome P450 2B6 at 1/1000 dilution



Sample: Lung (Mouse) Lysate at 40 ug Primary: Anti-Cytochrome P450 2B6 at 1/1000 dilution

### Submit a product review to Biocompare.com

Submit a review of this product to Biocompare.com to receive a \$20 Amazon.com giftcard! Your reviews help your fellow scientists make the right decisions. Thank you for your contribution.



Anti-Cytochrome P450 2B6 CYP2B6 Antibody

For Research Use Only. Not for use in diagnostic procedures.