

Anti-Phospho-IK gamma (S376) IKBKG Antibody

Catalog Number: A00874S376

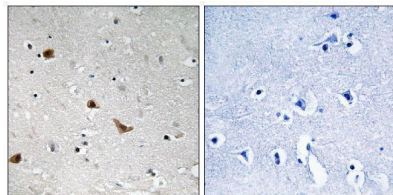
Overview

| | |
|----------------------|--|
| Product Name | Anti-Phospho-IK gamma (S376) IKBKG Antibody |
| Reactive Species | Human, Mouse, Rat |
| Description | Boster Bio Anti-Phospho-IK gamma (S376) IKBKG Antibody catalog # A00874S376. Tested in IHC, IF, ELISA applications. This antibody reacts with Human, Mouse, Rat. |
| Application | ELISA, IF, IHC |
| Clonality | Polyclonal |
| Formulation | Liquid in PBS containing 50% glycerol, 0.5% stabilizing protein and 0.02% sodium azide. *This antibody is supplied in a stabilized formulation. Compatibility with conjugation reactions depends on the chemistry of the conjugation method used. For conjugation methods that are not compatible with the stabilizing components present in this formulation, a carrier-free antibody format is required. |
| Storage Instructions | Store at -20°C for one year. For short term storage and frequent use, store at 4°C for up to one month. Avoid repeated freeze-thaw cycles. |
| Host | Rabbit |
| Uniprot ID | Q9Y6K9 |

Technical Details

| | |
|---------------------|---|
| Immunogen | The antiserum was produced against synthesized peptide derived from human IKK-gamma around the phosphorylation site of Ser376. AA range:342-391 |
| Cross Reactivity | No cross reactivity with other proteins. |
| Isotype | IgG |
| Form | Liquid |
| Concentration | 1 mg/ml |
| Purification | The antibody was affinity-purified from rabbit antiserum by affinity-chromatography using epitope-specific immunogen. |
| Suggested Dilutions | IHC 1:100-1:300 ELISA 1:5000 IF 1:50-200 |

Anti-Phospho-IK gamma (S376) IKBKG Antibody (A00874S376) Images



Immunohistochemistry analysis of paraffin-embedded human brain, using IKK-gamma (Phospho-Ser376) Antibody. The picture on the right is blocked with the phospho peptide.

Submit a product review to Biocompare.com

Submit a review of this product to Biocompare.com to receive a \$20 Amazon.com giftcard! Your reviews help your fellow scientists make the right decisions. Thank you for your contribution.



Anti-Phospho-IK gamma (S376) IKBKG Antibody

For Research Use Only. Not for use in diagnostic procedures.