

Anti-DELTA-4 DLL4 Antibody

Catalog Number: A00875-2

About DLL4

DELTA-4 (also called delta 4 precursor, delta ligand 4 precursor, Delta-like protein 4, DLL4, Drosophila Delta homolog 4 and notch ligand DLL4 precursor) is a homolog of the Drosophila delta protein. The delta gene family encodes Notch ligands that are characterized by a DSL domain, EGF repeats, and a transmembrane domain. DELTA-4 plays a role in the Notch signaling pathway and activates Notch-1 and Notch-4. DELTA-4 is a membrane protein that is expressed in the vascular endothelium.

Overview

Product Name	Anti-DELTA-4 DLL4 Antibody
Reactive Species	Human, Mouse
Description	Boster Bio Anti-DELTA-4 DLL4 Antibody (Catalog # A00875-2). Tested in ELISA, IHC, WB applications. This antibody reacts with Human, Mouse.
Application	ELISA, IHC, WB
Clonality	Polyclonal
Formulation	0.02 M Potassium Phosphate, 0.15 M Sodium Chloride, pH 7.2, 0.01% (w/v) Sodium Azide
Storage Instructions	Store vial at -20°C or below prior to opening. This vial contains a relatively low volume of reagent (25 uL). To minimize loss of volume dilute 1:10 by adding 225 uL of the buffer stated above directly to the vial. Recap, mix thoroughly and briefly centrifuge to collect the volume at the bottom of the vial. Use this intermediate dilution when calculating final dilutions as recommended below. Store the vial at -20°C or below after dilution. Avoid cycles of freezing and thawing. Expiration date is one (1) year from date of opening. (Ship on dry ice.)
Host	Rabbit
Uniprot ID	Q9NR61

Technical Details

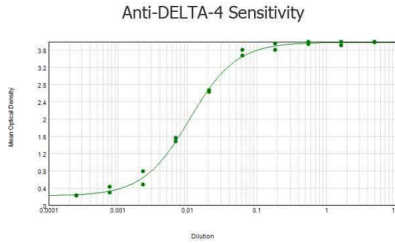
Immunogen	Anti-DELTA-4 antibody was prepared from whole rabbit serum produced by repeated immunizations with a synthetic peptide corresponding to an internal region of Human DELTA-4.
Predicted Reactive Species	Mouse, Rat
Isotype	IgG
Form	Liquid (sterile filtered)
Concentration	1.0mg/ml by UV absorbance at 280 nm
Purification	Anti-DELTA-4 affinity purified antibody is directed against human DELTA-4. The product was

affinity purified from monospecific antiserum by immunoaffinity chromatography. A BLAST analysis was used to suggest reactivity with this protein from human based on 100% homology for the immunogen sequence. However, cross-reactivity is expected with mouse, rat and chimpanzee DELTA-4 based on a 91% homology to the core 12 amino acid sequence within the 14 amino acid immunogen sequence. Cross-reactivity with DELTA-4 homologues from other sources has not been determined.

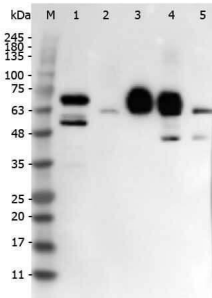
Suggested Dilutions

ELISA: 1:5,000 - 1:25,000
IHC: 10 µg/mL to 20 µg/mL
WB: 1:500 - 1:2,500
Anti-DELTA-4 has been tested for use in ELISA, immunohistochemistry and western blotting. Specific conditions for reactivity should be optimized by the end user. Expect a band approximately 74 kDa in size corresponding to DELTA-4 by western blotting in the appropriate cell lysate or extract. For best results use Goat Serum as blocking agent in western blotting.

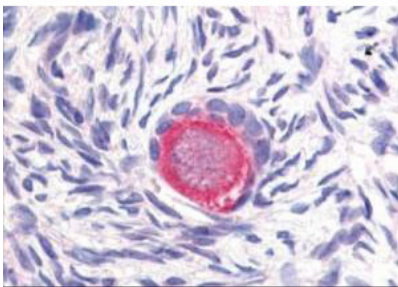
Anti-DELTA-4 DLL4 Antibody (A00875-2) Images



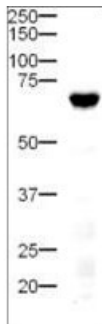
ELISA results of purified Rabbit anti-DELTA-4 Antibody tested against BSA-conjugated peptide of immunizing peptide. Each well was coated in duplicate with 0.1 μ g of conjugate. The starting dilution of antibody was 5ug/ml and the X-axis represents the Log10 of a 3-fold dilution. This titration is a 4-parameter curve fit where the IC50 is defined as the titer of the antibody. Assay performed using 3% fish gel, Goat anti-Rabbit IgG Antibody Peroxidase Conjugated (Min X Bv Ch Gt GP Ham Hs Hu Ms Rt & Sh Serum Proteins) and TMB ELISA Peroxidase Substrate .



Western Blot of Rabbit anti-DELTA-4 antibody. Lane 1: Mouse Pancreas Whole Cell Lysate . Lane 2: HUVEK Whole Cell Lysate. Lane 3: Human rDLL4. Lane 4: HEK293 Whole Cell Lysate + Human rDLL4. Lane 5: HEK293 Whole Cell Lysate . Load: 10 μ g per lane for Whole Cell Lysates or 50 ng for recombinant protein. Primary antibody: DELTA-4 antibody at 1:1,000 overnight at 4°C. Secondary antibody: Peroxidase rabbit secondary antibody at 1:40,000 for 30 min at RT. Block: Blocking Buffer for Fluorescent Western Blotting for 30 min at RT. Predicted/Observed size: 74 kDa, 74 kDa for DELTA-4. Other band(s): Not Identified.



Boster's Affinity Purified anti-Delta-4 antibody was used at 20 μ g/ml to detect Delta-4 in a variety of tissues including colon, liver, skeletal muscle, ovary, pancreas, prostate, testes, thymus, tonsil and uterus. In contrast to reported findings, no staining was observed in vascular tissue. This image shows Delta-4 staining of human ovary. Tissue was formalin-fixed and paraffin embedded. Personal Communication, Tina Roush, LifeSpanBiosciences, Seattle, WA.



Western Blot of Rabbit anti-Delta-4 antibody. Lane 1: mouse pancreatic tissue . Load: 20 μ g per lane. Primary antibody: Delta-4 antibody at 1:500 for overnight at 4°C. Secondary antibody: HRP-labeled Goat anti-Rabbit IgG secondary antibody at 1:5,000 for 1 hour at RT. A chemiluminescence system was used for signal detection using a 3 min exposure time. Block: 5% Goat Serum overnight at 4°C. Predicted/Observed size: 74 kDa, 70 kDa for Delta 4. Other band(s): none.

Submit a product review to [Biocompare.com](https://www.biocompare.com)

Submit a review of this product to [Biocompare.com](https://www.biocompare.com) to receive a \$20 Amazon.com giftcard! Your reviews help your fellow scientists make the right decisions. Thank you for your contribution.



Anti-DELTA-4 DLL4 Antibody

For Research Use Only. Not for use in diagnostic procedures.