

## Anti-Apaf1 Antibody

Catalog Number: A00889

### About APAF1

Apoptosis is related to many diseases and induced by a family of cell death receptors and their ligands. Cell death signals are transduced by death domain containing adapter molecules and members of the caspase family of proteases. The mammalian homologues of the key cell death gene CED-4 in *C. elegans* has been identified recently from human and mouse and designated Apaf1 (for apoptosis protease-activating factor 1). Apaf1 binds to cytochrome c (Apaf-2) and caspase-9 (Apaf-3), which leads to caspase-9 activation. Activated caspase-9 in turn cleaves and activates caspase-3 that is one of the key proteases, being responsible for the proteolytic cleavage of many key proteins in apoptosis. Apaf1 can also associate with caspase-4 and caspase-8. Apaf1 is ubiquitously expressed in human tissues.

### Overview

Product Name	Anti-Apaf1 Antibody
Reactive Species	Human, Mouse, Rat
Description	Boster Bio Anti-Apaf1 Antibody (Catalog # A00889). Tested in ELISA, WB, IHC-P, IF applications. This antibody reacts with Human, Mouse, Rat.
Application	ELISA, IF, IHC-P, WB
Clonality	Polyclonal
Formulation	Apaf1 Antibody is supplied in PBS containing 0.02% sodium azide.
Storage Instructions	Apaf1 antibody can be stored at 4°C for three months and -20°C, stable for up to one year. Avoid repeated freeze-thaw cycles. Antibodies should not be exposed to prolonged high temperatures.
Host	Rabbit
Uniprot ID	O14727

### Technical Details

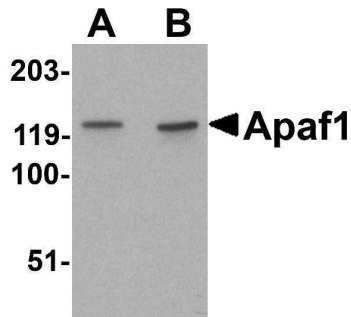
Immunogen	Apaf1 antibody was raised against a peptide corresponding to amino acids near the amino terminus of human Apaf1. The sequences of the immunogenic peptide are identical between human and mouse. The immunogen is located within the first 50 amino acids of Apaf1.
Predicted Reactive Species	Bovine, Chicken
Isotype	IgG
Form	Liquid
Concentration	1 mg/ml
Purification	Apaf1 Antibody is affinity chromatography purified via peptide column.

Suggested Dilutions

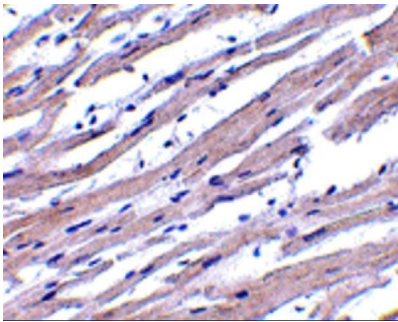
Apaf1 antibody can be used for detection of Apaf1 by Western blot at 1 ug/mL. A 115 - 130 kDa band should be detected. Antibody can also be used for immunohistochemistry starting at 1 ug/mL. For immunofluorescence start at 10 ug/mL.

Antibody validated: Western Blot in human samples; Immunohistochemistry in human samples and Immunofluorescence in human samples. All other applications and species not yet tested. Optimal dilutions for each application should be determined by the researcher.

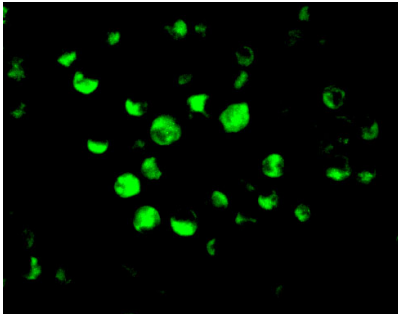
## Anti-Apaf1 Antibody (A00889) Images



Western blot analysis of Apaf1 in K562 cell lysate with Apaf1 antibody at (A) 1 and (B) 2 ug/ml.



Immunohistochemistry of Apaf1 in human heart tissue with Apaf1 antibody at 1 ug/mL.



Immunofluorescence of Apaf1 in K562 cells with Apaf1 antibody at 10 ug/mL.

## 1 Publications Citing This Product

1. PubMed ID: 31452277, Zhang Y, Yang C, Yang S, Guo Z. MiRNA-27a decreases ultraviolet B irradiation-induced cell damage. *J Cell Biochem.* 2020 Feb;121(2):1032-1038. doi: 10.1002/jcb.29337. Epub 2019 Aug 26. PMID: 31452277.

Visit [bosterbio.com/anti-apaf1-antibody-a00889-boster.html](https://bosterbio.com/anti-apaf1-antibody-a00889-boster.html) to see all 1 publications.

## Submit a product review to Biocompare.com

Submit a review of this product to Biocompare.com to receive a \$20 Amazon.com giftcard! Your reviews help your fellow scientists make the right decisions. Thank you for your contribution.



Anti-Apaf1 Antibody

For Research Use Only. Not for use in diagnostic procedures.