

Anti-Flk-1 KDR Antibody

Catalog Number: A00901-1

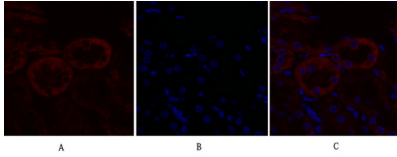
Overview

Product Name	Anti-Flk-1 KDR Antibody
Reactive Species	Human, Mouse, Fish
Description	Boster Bio Anti-Flk-1 KDR Antibody catalog # A00901-1. Tested in WB, IHC, IF, ELISA applications. This antibody reacts with Human, Mouse, Fish.
Application	ELISA, IF, IHC, WB
Clonality	Polyclonal
Formulation	Liquid in PBS containing 50% glycerol, 0.5% stabilizing protein and 0.02% sodium azide. *This antibody is supplied in a stabilized formulation. Compatibility with conjugation reactions depends on the chemistry of the conjugation method used. For conjugation methods that are not compatible with the stabilizing components present in this formulation, a carrier-free antibody format is required.
Storage Instructions	Store at -20°C for one year. For short term storage and frequent use, store at 4°C for up to one month. Avoid repeated freeze-thaw cycles.
Host	Rabbit
Uniprot ID	P35968

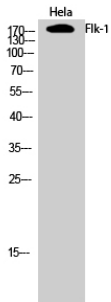
Technical Details

Immunogen	The antiserum was produced against synthesized peptide derived from human VEGFR2. AA range:917-966
Cross Reactivity	No cross reactivity with other proteins.
Isotype	IgG
Form	Liquid
Concentration	1 mg/ml
Purification	Immunogen affinity purified
Suggested Dilutions	WB 1:500-1:2000 IHC 1:100-1:300 IF 1:200-1:1000 ELISA 1:20000

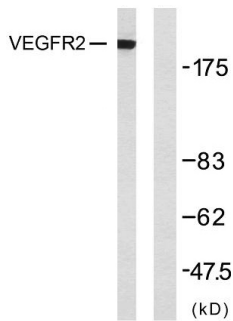
Anti-Flk-1 KDR Antibody (A00901-1) Images



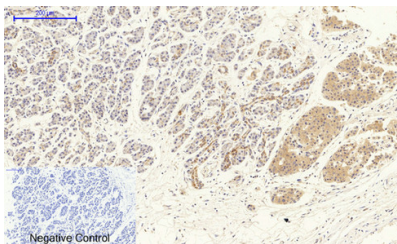
Immunofluorescence analysis of rat-kidney tissue. 1,Flk-1 Polyclonal Antibody (red) was diluted at 1:200 (4°C,overnight). 2, Cy3 labeled Secondary antibody was diluted at 1:300 (room temperature, 50min).3, Picture B: DAPI (blue) 10min. Picture A:Target. Picture B: DAPI. Picture C: merge of A+B



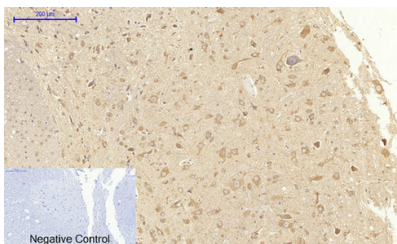
Western Blot analysis of HeLa cells using Flk-1 Polyclonal Antibody diluted at 1:1000



Western blot analysis of lysates from SK-OV3 cells, using VEGFR2 Antibody. The lane on the right is blocked with the synthesized peptide.

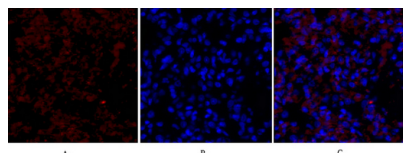
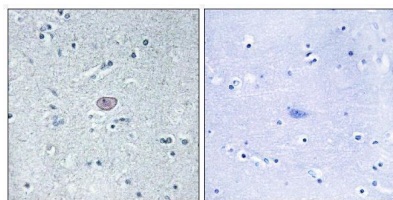


Immunohistochemical analysis of paraffin-embedded Human-stomach-cancer tissue. 1,Flk-1 Polyclonal Antibody was diluted at 1:200 (4°C,overnight). 2, Sodium citrate pH 6.0 was used for antibody retrieval (>98°C,20min). 3,Secondary antibody was diluted at 1:200 (room temperature, 30min). Negative control was used by secondary antibody only.



Immunohistochemical analysis of paraffin-embedded Rat-spinal-cord tissue. 1,Flk-1 Polyclonal Antibody was diluted at 1:200 (4°C,overnight). 2, Sodium citrate pH 6.0 was used for antibody retrieval (>98°C,20min). 3,Secondary antibody was diluted at 1:200 (room temperature, 30min). Negative control was used by secondary antibody only.

Immunohistochemistry analysis of paraffin-embedded human brain tissue, using VEGFR2 Antibody. The picture on the right is blocked with the synthesized peptide.



Immunofluorescence analysis of rat-lung tissue. 1,Flk-1 Polyclonal Antibody (red) was diluted at 1:200 (4°C,overnight). 2, Cy3 labeled Secondary antibody was diluted at 1:300 (room temperature, 50min).3, Picture B: DAPI (blue) 10min. Picture A:Target. Picture B: DAPI. Picture C: merge of A+B

2 Publications Citing This Product

1. PubMed ID: 25009634, Zhu Y, Tuerxun A, Hui Y, Abliz P. Exp Ther Med. 2014 Aug;8(2):647-651. Epub 2014 Jun 12. Effects Of Propranolol And Isoproterenol On Infantile Hemangioma Endothelial Cells In Vitro.
2. PubMed ID: 25550894, Liu M, Yang S, Zhang D, Shui P, Song S, Yao J, Dai Y, Sun Q. Int J Clin Exp Med. 2014 Nov 15;7(11):3859-69. Ecollection 2014. Fructopyrano-(1

Visit bosterbio.com/anti-flk-1-antibody-a00901-1-boster.html to see all 2 publications.

Submit a product review to Biocompare.com

Submit a review of this product to Biocompare.com to receive a \$20 Amazon.com giftcard! Your reviews help your fellow scientists make the right decisions. Thank you for your contribution.



Anti-Flk-1 KDR Antibody

For Research Use Only. Not for use in diagnostic procedures.