

## Anti-ATF3 Antibody

Catalog Number: A00904

### About ATF3

ATF3, or Activating Transcription Factor 3, is a member of mammalian activation TF/CREB protein family of transcription factors. ATF3 binds the cAMP response element (cre) (consensus: 5'-gtgacgt[ac][ag]-3'), a sequence present in many viral and cellular promoters. However, ATF3 represses rather than activates transcription from promoters with ATF sites stabilizing inhibitory co-factors at the promoter. Alternate splicing forms of ATF3, called ATF3 delta Zip, lack the leucine zipper domain and do not bind DNA. ATF3 delta Zip stimulates transcription, presumably by sequestering inhibitory co-factors away from the promoter. Human ATF3 (SwissProt 18847) is a 20575 Da protein composed of 181 amino acids.

### Overview

Product Name	Anti-ATF3 Antibody
Reactive Species	Human
Description	Boster Bio Anti-ATF3 Antibody (Catalog # A00904). Tested in ELISA, WB applications. This antibody reacts with Human.
Application	ELISA, WB
Clonality	Polyclonal
Formulation	0.02 M Potassium Phosphate, 0.15 M Sodium Chloride, pH 7.2, 0.01% (w/v) Sodium Azide
Storage Instructions	Store vial at -20°C prior to opening. Aliquot contents and freeze at -20°C or below for extended storage. Avoid cycles of freezing and thawing. Centrifuge product if not completely clear after standing at room temperature. This product is stable for several weeks at 4°C as an undiluted liquid. Dilute only prior to immediate use. Expiration date is one (1) year from date of opening. (Ship on dry ice.)
Host	Rabbit
Uniprot ID	P18847

### Technical Details

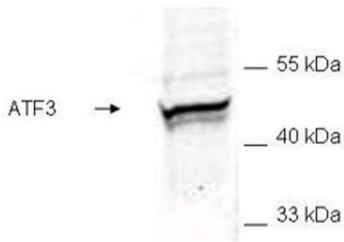
Immunogen	This antibody was prepared from whole rabbit serum produced by repeated immunizations with a synthetic peptide corresponding to an internal region of human ATF3.
Predicted Reactive Species	African Green Monkey, Chimpanzee, Zebrafish
Isotype	IgG
Form	Liquid (sterile filtered)
Concentration	1.0 mg/mL by UV absorbance at 280 nm
Purification	This affinity-purified antibody is directed against human ATF3 and is useful in determining its

presence in various assays including ELISA and western blotting. This polyclonal antibody recognizes over-expressed ATF3 protein found in various expression systems. Reactivity is observed against human ATF3. Cross-reactivity with ATF3 from other mammalian sources has not been tested.

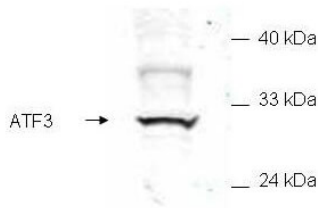
Suggested Dilutions

ELISA: 1:5,000 - 1:20,000  
WB: 1:200 - 1:2000  
Affinity purified anti-ATF3 has been tested by ELISA and western blotting against recombinant forms of the protein. Although not tested, this antibody is likely function in most immunoassays including immunofluorescence microscopy, immunohistochemistry.

## Anti-ATF3 Antibody (A00904) Images



Western blot of E.coli whole cell extract transfected with GST epitope tagged human ATF3. Boster's Affinity purified anti-ATF3 detects a band ~48 kDa corresponding to recombinant human ATF3. Immunostaining using Boster's anti-GST epitope tag antibody confirms the composition of the recombinant band (not shown). The protein was transferred to nitrocellulose using standard methods. After blocking with 5% goat serum and 0.5% non fat milk in PBS, the membrane was probed with the primary antibody diluted 1:200 in 0.2X blocking buffer in PBS overnight at 4°C. Reaction was followed by washes and reaction with a 1:5000 dilution of IRDye800 conjugated Gt-a-Rabbit IgG [H&L] (code 611-132-122) for 30 min at room temperature. LICOR's Odyssey® Infrared Imaging System was used to scan and process the image. Other detection systems will yield similar results.



Western blot of mammalian whole cell extract transfected with HA epitope tagged human ATF3. Boster's Affinity purified anti-ATF3 detects a band ~31 kDa corresponding to recombinant human ATF3. Immunostaining using Boster's anti-HA epitope tag antibody confirms the composition of the recombinant band (not shown). The protein was transferred to nitrocellulose in 30 minutes using standard methods. After blocking with 5% goat serum and 0.5% non-fat milk in PBS, the membrane was probed with the primary antibody diluted 1:200 in 0.2X blocking buffer in PBS overnight at 4°C. Reaction was followed by washes and reaction with a 1:5000 dilution of IRDye™ 800 conjugated Gt-a-Rabbit IgG [H&L] (code 611-132-122) for 30 min at room temperature. LICOR's Odyssey® Infrared Imaging System was used to scan and process the image. Other detection systems will yield similar results.

### Submit a product review to Biocompare.com

Submit a review of this product to Biocompare.com to receive a \$20 Amazon.com giftcard! Your reviews help your fellow scientists make the right decisions. Thank you for your contribution.



### Anti-ATF3 Antibody

For Research Use Only. Not for use in diagnostic procedures.