

## Anti-ATF3 (N159) Antibody

Catalog Number: A00904-1

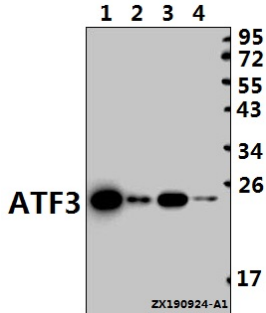
### Overview

Product Name	Anti-ATF3 (N159) Antibody
Reactive Species	Human, Rat
Description	Boster Bio Anti-ATF3 (N159) Antibody catalog # A00904-1. Tested in WB,IHC applications. This antibody reacts with Human,Rat.
Application	IHC, WB
Clonality	Polyclonal
Formulation	Rabbit IgG, 1mg/ml in PBS with 0.02% sodium azide, 50% glycerol, pH7.2
Storage Instructions	Store at -20°C for one year. For short term storage and frequent use, store at 4°C for up to one month. Avoid repeated freeze-thaw cycles.
Host	Rabbit
Uniprot ID	P18847

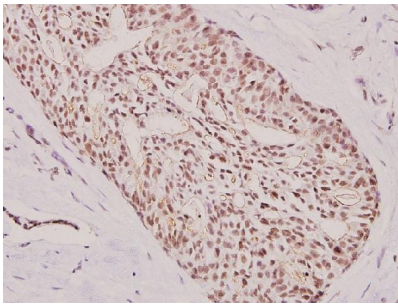
### Technical Details

Immunogen	Synthetic peptide, corresponding to Human ATF3.
Cross Reactivity	No cross reactivity with other proteins.
Isotype	IgG
Form	Liquid
Concentration	1 mg/ml
Purification	The antibody was affinity-purified from rabbit antiserum by affinity-chromatography using epitope-specific immunogen and the purity is > 95% (by SDS-PAGE).
Suggested Dilutions	WB: 1:1000-1:2000 IHC: 1:50-1:200

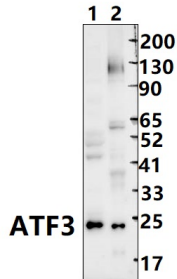
## Anti-ATF3 (N159) Antibody (A00904-1) Images



Western blot (WB) analysis of ATF3 (N159) pAb at 1:500 dilution Lane1:L02 whole cell lysate(40ug) Lane2:SGC7901 whole cell lysate(40ug) Lane3:A549 whole cell lysate(40ug) Lane4:HEK293T whole cell lysate(40ug)



Immunohistochemistry (IHC) analyzes of ATF3 (N159) pAb in paraffin-embedded human breast carcinoma tissue at 1:100.



Western blot (WB) analysis of ATF3 (N159) at 1:1000 dilution Lane1:The heart tissue lysate of Rat(30ug) Lane2:HepG2 whole cell lysate(30ug)

### Submit a product review to Biocompare.com

Submit a review of this product to Biocompare.com to receive a \$20 Amazon.com giftcard! Your reviews help your fellow scientists make the right decisions. Thank you for your contribution.



### Anti-ATF3 (N159) Antibody

For Research Use Only. Not for use in diagnostic procedures.