

## Anti-D(1A) dopamine receptor DRD1 Antibody

Catalog Number: A00907

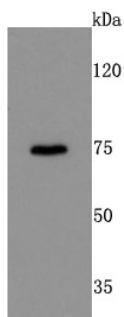
### Overview

Product Name	Anti-D(1A) dopamine receptor DRD1 Antibody
Reactive Species	Human, Mouse, Rat
Description	Boster Bio Anti-D (1A) dopamine receptor DRD1 Antibody catalog # A00907. Tested in WB applications. This antibody reacts with Human,Mouse,Rat.
Application	WB
Clonality	Polyclonal
Formulation	Rabbit IgG, 1mg/ml in PBS with 0.02% sodium azide, 50% glycerol, pH7.2
Storage Instructions	Store at -20°C for one year. For short term storage and frequent use, store at 4°C for up to one month. Avoid repeated freeze-thaw cycles.
Host	Rabbit
Uniprot ID	P21728

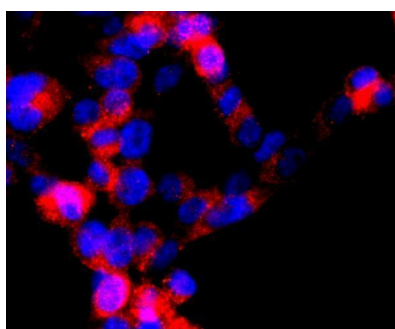
### Technical Details

Immunogen	recombinant protein
Cross Reactivity	No cross reactivity with other proteins.
Isotype	IgG
Form	Liquid
Concentration	1 mg/ml
Purification	ProA affinity purified
Suggested Dilutions	WB: 1:500-1:2000

## Anti-D(1A) dopamine receptor DRD1 Antibody (A00907) Images



Western blot analysis of DRD1 on mouse kidney cells lysates using anti-DRD1 antibody at 1/500 dilution.



ICC staining DRD1 in 293T cells (red). The nuclear counter stain is DAPI (blue). Cells were fixed in paraformaldehyde, permeabilised with 0.25% Triton X100/PBS.

### Submit a product review to [Biocompare.com](https://www.biocompare.com)

Submit a review of this product to [Biocompare.com](https://www.biocompare.com) to receive a \$20 Amazon.com giftcard! Your reviews help your fellow scientists make the right decisions. Thank you for your contribution.



Anti-D(1A) dopamine receptor DRD1 Antibody

For Research Use Only. Not for use in diagnostic procedures.