

Anti-ORAI1 Antibody

Catalog Number: A00909-1

About ORAI1

Antigen stimulation of immune cells triggers Ca⁺⁺ entry through Ca⁺⁺ release-activated Ca⁺⁺ (CRAC) channels. ORAI1 is a recently identified four-transmembrane spanning protein that is an essential component of CRAC. A missense mutation in this protein in humans is the cause of one form of hereditary severe combined immune deficiency (SCID) which results in ablated T-cell Ca⁺⁺ entry. It has been suggested that ORAI1 functions as a highly selective Ca⁺⁺ plasma membrane channel that is gated through interactions with STIM1, the store-activated endoplasmic reticulum Ca⁺⁺ sensor.

Overview

Product Name	Anti-ORAI1 Antibody
Reactive Species	Human, Mouse
Description	Boster Bio Anti-ORAI1 Antibody (Catalog # A00909-1). Tested in ELISA, WB, IHC-P, IF applications. This antibody reacts with Human, Mouse.
Application	ELISA, IF, IHC-P, WB
Clonality	Polyclonal
Formulation	ORAI1 Antibody is supplied in PBS containing 0.02% sodium azide.
Storage Instructions	ORAI1 antibody can be stored at 4°C for three months and -20°C, stable for up to one year. Avoid repeated freeze-thaw cycles. Antibodies should not be exposed to prolonged high temperatures.
Host	Rabbit
Uniprot ID	Q96D31

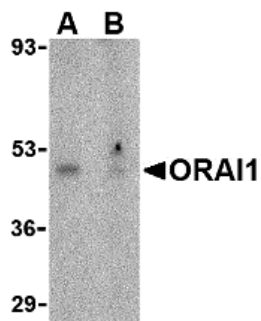
Technical Details

Immunogen	ORAI1 antibody was raised against an 18 amino acid synthetic peptide from near the amino terminus of human ORAI1. The immunogen is located within the first 50 amino acids of ORAI1.
Predicted Reactive Species	Bovine, Chicken
Cross Reactivity	This antibody is predicted to have no cross-reactivity to ORAI2 or ORAI3.
Isotype	IgG
Form	Liquid
Concentration	1 mg/mL
Purification	ORAI1 Antibody is affinity chromatography purified via peptide column.

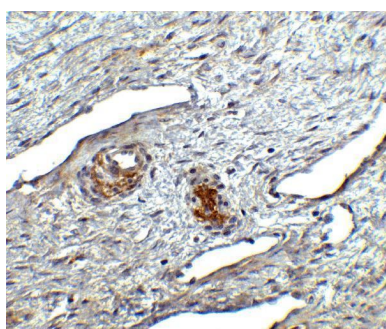
Suggested Dilutions

ORAI1 antibody can be used for detection of ORAI1 by Western blot at 1 ug/mL. Antibody can also be used for immunohistochemistry starting at 10 ug/mL. For immunofluorescence start at 20 ug/mL. Antibody validated: Western Blot in human samples; Immunohistochemistry in human samples and Immunofluorescence in human samples. All other applications and species not yet tested. Optimal dilutions for each application should be determined by the researcher.

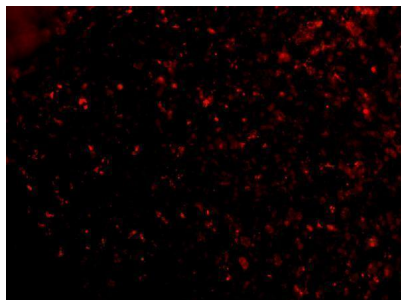
Anti-ORAI1 Antibody (A00909-1) Images



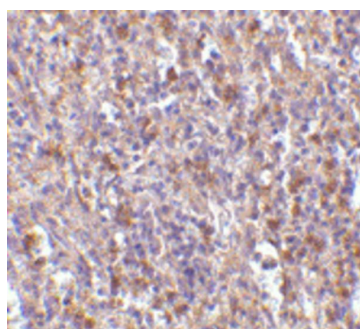
Western blot analysis of ORAI1 in human ovary tissue lysate with ORAI1 antibody at 1 ug/mL in the (A) absence or (B) presence of blocking peptide.



Immunohistochemistry of ORAI1 in human ovary tissue with ORAI1 antibody at 2.5 ug/ml.



Immunofluorescence of ORAI1 in Human Spleen cells with ORAI1 antibody at 20 ug/mL.



Immunohistochemistry of ORAI1 in human spleen tissue with ORAI1 antibody at 10 ug/mL.

Submit a product review to [Biocompare.com](https://www.biocompare.com)

Submit a review of this product to [Biocompare.com](https://www.biocompare.com) to receive a \$20 Amazon.com giftcard! Your reviews help your fellow scientists make the right decisions. Thank you for your contribution.



Anti-ORAI1 Antibody

For Research Use Only. Not for use in diagnostic procedures.