

Anti-Pannexin-1 PANX1 Antibody

Catalog Number: A00915

About PANX1

The pannexin gene family encodes a second class of putative gap junction proteins and are highly conserved in invertebrates and mammals. Pannexins (Panx) are four-pass transmembrane proteins that oligomerize to form large pore ion and metabolite-permeable channels. Pannexin-1 (PANX1) and Pannexin-3 are closely related, while Pannexin-2 is a more distant relation. PANX1 is a transmembrane protein that forms a mechanosensitive ATP-permeable channel between adjacent cells and in the endoplasmic reticulum. PANX1 may play a role as a Ca²⁺-leak channel to regulate ER Ca²⁺ homeostasis and regulates neural stem and progenitor cell proliferation.

Overview

Product Name	Anti-Pannexin-1 PANX1 Antibody
Reactive Species	Human, Mouse, Rat
Description	Boster Bio Anti-Pannexin-1 PANX1 Antibody (Catalog # A00915). Tested in ELISA, WB, IF applications. This antibody reacts with Human, Mouse, Rat.
Application	ELISA, IF, WB
Clonality	Polyclonal
Formulation	PANX1 Antibody is supplied in PBS containing 0.02% sodium azide.
Storage Instructions	PANX1 antibody can be stored at 4°C for three months and -20°C, stable for up to one year. Avoid repeated freeze-thaw cycles. Antibodies should not be exposed to prolonged high temperatures.
Host	Rabbit
Uniprot ID	Q96RD7

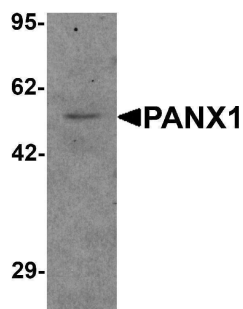
Technical Details

Immunogen	Rabbit polyclonal PANX1 antibody was raised against a 17 amino acid peptide near the amino terminus of human PANX1. The immunogen is located within amino acids 70 - 120 of PANX1.
Predicted Reactive Species	Pig
Cross Reactivity	Two transcript variants encoding different isoforms have been found for this gene.
Isotype	IgG
Form	Liquid
Concentration	1 mg/mL
Purification	PANX1 Antibody is affinity chromatography purified via peptide column.

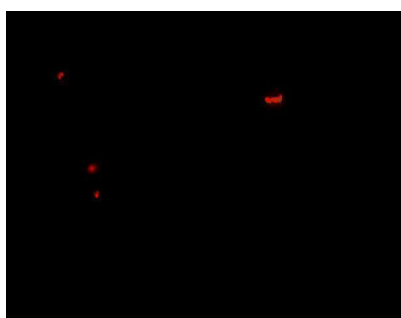
Suggested Dilutions

PANX1 antibody can be used for detection of PANX1 by Western blot at 1 - 2 ug/mL. For immunofluorescence start at 20 ug/mL.
Antibody validated: Western Blot in human samples and Immunofluorescence in human samples. All other applications and species not yet tested. Optimal dilutions for each application should be determined by the researcher.

Anti-Pannexin-1 PANX1 Antibody (A00915) Images



Western blot analysis of PANX1 in human ovary tissue lysate with PANX1 antibody at 1 ug/mL.



Immunofluorescence of PANX1 in human ovary tissue with PANX1 antibody at 20 ug/mL.

Submit a product review to Biocompare.com

Submit a review of this product to Biocompare.com to receive a \$20 Amazon.com giftcard! Your reviews help your fellow scientists make the right decisions. Thank you for your contribution.



Anti-Pannexin-1 PANX1 Antibody

For Research Use Only. Not for use in diagnostic procedures.