

Anti-Phospho-ATF-2 (S62) Antibody

Catalog Number: A00916S62-1

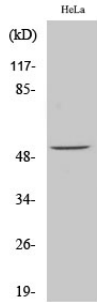
Overview

Product Name	Anti-Phospho-ATF-2 (S62) Antibody
Reactive Species	Human, Mouse, Rat
Description	Boster Bio Anti-Phospho-ATF-2 (S62) Antibody catalog # A00916S62-1. Tested in WB, IHC, IF, IP, ELISA applications. This antibody reacts with Human, Mouse, Rat.
Application	ELISA, IP, IF, IHC, WB
Clonality	Polyclonal
Formulation	Liquid in PBS containing 50% glycerol, 0.5% stabilizing protein and 0.02% sodium azide. *This antibody is supplied in a stabilized formulation. Compatibility with conjugation reactions depends on the chemistry of the conjugation method used. For conjugation methods that are not compatible with the stabilizing components present in this formulation, a carrier-free antibody format is required.
Storage Instructions	Store at -20°C for one year. For short term storage and frequent use, store at 4°C for up to one month. Avoid repeated freeze-thaw cycles.
Host	Rabbit
Uniprot ID	P15336

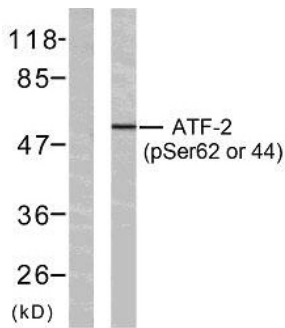
Technical Details

Immunogen	The antiserum was produced against synthesized peptide derived from human ATF2 around the phosphorylation site of Ser62 or 44. AA range:29-78
Cross Reactivity	No cross reactivity with other proteins.
Isotype	IgG
Form	Liquid
Concentration	1 mg/ml
Purification	The antibody was affinity-purified from rabbit antiserum by affinity-chromatography using epitope-specific immunogen.
Suggested Dilutions	WB 1:500-1:2000 IHC 1:100-1:300 IP 2-5 ug/mg lysate ELISA 1:20000 IF 1:50-200

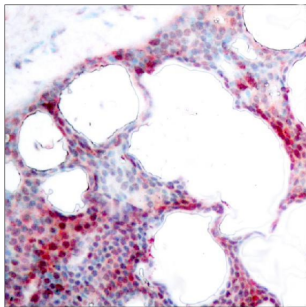
Anti-Phospho-ATF-2 (S62) Antibody (A00916S62-1) Images



Western Blot analysis of HeLa cells using Phospho-ATF-2 (S62) Polyclonal Antibody diluted at 1:1000



Western blot analysis of lysates from HeLa cells treated with TNF-alpha, using ATF2 (Phospho-Ser62 or 44) Antibody. The lane on the left is blocked with the phospho peptide.



Immunohistochemistry analysis of paraffin-embedded human breast carcinoma, using ATF2 (Phospho-Ser62 or 44) Antibody.

Submit a product review to Biocompare.com

Submit a review of this product to Biocompare.com to receive a \$20 Amazon.com giftcard! Your reviews help your fellow scientists make the right decisions. Thank you for your contribution.



Anti-Phospho-ATF-2 (S62) Antibody

For Research Use Only. Not for use in diagnostic procedures.