

Anti-CPT1A Antibody

Catalog Number: A00917

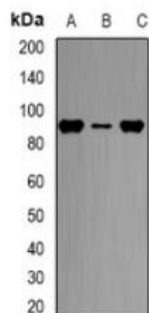
Overview

Product Name	Anti-CPT1A Antibody
Reactive Species	Human, Mouse, Rat
Description	Boster Bio Anti-CPT1A Antibody catalog # A00917. Tested in WB,IHC,ICC/IF,IP applications. This antibody reacts with Human,Mouse,Rat.
Application	IP, IF, IHC, ICC, WB
Clonality	Polyclonal
Formulation	Rabbit IgG, 1mg/ml in PBS with 0.02% sodium azide, 50% glycerol, pH7.2
Storage Instructions	Store at -20°C for one year. For short term storage and frequent use, store at 4°C for up to one month. Avoid repeated freeze-thaw cycles.
Host	Rabbit
Uniprot ID	P50416

Technical Details

Immunogen	Recombinant full length protein of human CPT1A.
Cross Reactivity	No cross reactivity with other proteins.
Isotype	IgG
Form	Liquid
Concentration	1 mg/ml
Purification	The antibody was affinity-purified from rabbit antiserum by affinity-chromatography using epitope-specific immunogen and the purity is > 95% (by SDS-PAGE).
Suggested Dilutions	WB: 1:500-1:2000 IHC: 1:50-1:100 ICC/IF: 1:50-1:200 IP: 1:50-1:100

Anti-CPT1A Antibody (A00917) Images



Western blot analysis of CPT1A expression in HL60 (A), THP1 (B), BT474 (C) whole cell lysates.

Submit a product review to Biocompare.com

Submit a review of this product to Biocompare.com to receive a \$20 Amazon.com giftcard! Your reviews help your fellow scientists make the right decisions. Thank you for your contribution.



Anti-CPT1A Antibody

For Research Use Only. Not for use in diagnostic procedures.