

Anti-IL-12A Antibody

Catalog Number: A00918

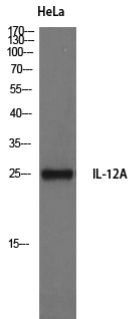
Overview

Product Name	Anti-IL-12A Antibody
Reactive Species	Human, Mouse, Rat
Description	Boster Bio Anti-IL-12A Antibody catalog # A00918. Tested in WB, IHC, IF, ELISA applications. This antibody reacts with Human, Mouse, Rat.
Application	ELISA, IF, IHC, WB
Clonality	Polyclonal
Formulation	Liquid in PBS containing 50% glycerol, 0.5% stabilizing protein and 0.02% sodium azide. *This antibody is supplied in a stabilized formulation. Compatibility with conjugation reactions depends on the chemistry of the conjugation method used. For conjugation methods that are not compatible with the stabilizing components present in this formulation, a carrier-free antibody format is required.
Storage Instructions	Store at -20°C for one year. For short term storage and frequent use, store at 4°C for up to one month. Avoid repeated freeze-thaw cycles.
Host	Rabbit
Uniprot ID	P29459

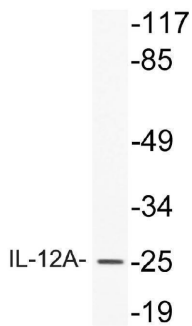
Technical Details

Immunogen	The antiserum was produced against synthesized peptide derived from human IL-12A. AA range:16-65
Cross Reactivity	No cross reactivity with other proteins.
Isotype	IgG
Form	Liquid
Concentration	1 mg/ml
Purification	The antibody was affinity-purified from rabbit antiserum by affinity-chromatography using an epitope-specific immunogen.
Suggested Dilutions	WB 1:500-1:2000 IHC:1:50-300 ELISA 1:20000 IF 1:50-200

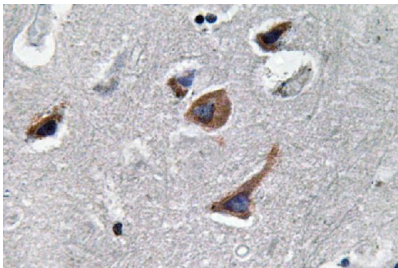
Anti-IL-12A Antibody (A00918) Images



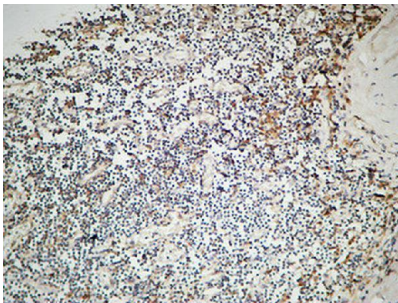
Western Blot (WB) analysis of HeLa cells using IL-12A Polyclonal antibody.



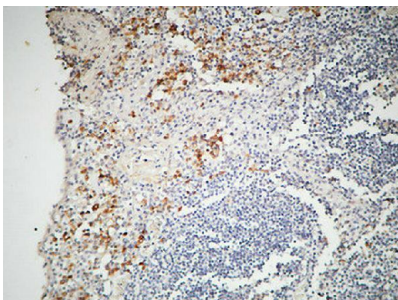
Western blot analysis of lysate from HeLa cells, using IL-12A antibody.



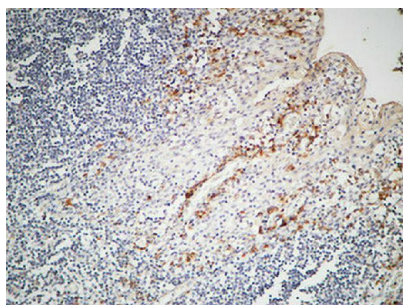
Immunohistochemistry analysis of IL-12A antibody in paraffin-embedded human brain tissue.



Immunohistochemical analysis of paraffin-embedded Human Amygdala. 1, Antibody was diluted at 1:200 (4°C overnight). 2, High-pressure and temperature EDTA, pH8.0 was used for antigen retrieval. 3, Secondary antibody was diluted at 1:200 (room temperature, 30min).



Immunohistochemical analysis of paraffin-embedded Human Amygdala. 1, Antibody was diluted at 1:200 (4°C overnight). 2, High-pressure and temperature EDTA, pH8.0 was used for antigen retrieval. 3, Secondary antibody was diluted at 1:200 (room temperature, 30min).



Immunohistochemical analysis of paraffin-embedded Human Amygdala. 1, Antibody was diluted at 1:200 (4°C overnight). 2, High-pressure and temperature EDTA, pH8.0 was used for antigen retrieval. 3, Secondary antibody was diluted at 1:200 (room temperature, 30min).

2 Publications Citing This Product

1. PubMed ID: -, Jiang Peng-Fei, Peng Jun, Tan Han-Yu, Ou-Yang Yun, Qin Gen-Yan, Peng Qing-Hua, Effects of Buddlejae Flos Granules on Inflammatory Factors TGF-beta1, NF-kappaB, IL-10 and IL-12 in Lacrimal Gland Cells of Castrated Male Rabbits, Digital Chinese Medicine, Volume 2, Issue 2, 2019, Pages 97-104, ISSN 2589-3777, <https://doi.org/10.1016/j.dcm.2019.09.004>.

2. PubMed ID: 27074905, Re-polarizing Myeloid-derived Suppressor Cells (MDSCs) with Cationic Polymers for Cancer Immunotherapy

Visit bosterbio.com/anti-il-12a-antibody-a00918-boster.html to see all 2 publications.

Submit a product review to Biocompare.com

Submit a review of this product to Biocompare.com to receive a \$20 Amazon.com giftcard! Your reviews help your fellow scientists make the right decisions. Thank you for your contribution.



Anti-IL-12A Antibody

For Research Use Only. Not for use in diagnostic procedures.