

## Anti-FAS-L FASLG Antibody

Catalog Number: A00925-1

### Overview

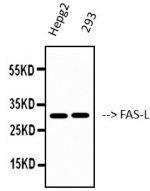
Product Name	Anti-FAS-L FASLG Antibody
Reactive Species	Human, Mouse, Pig
Description	Boster Bio Anti-FAS-L FASLG Antibody catalog # A00925-1. Tested in ELISA, IF, IHC, WB applications. This antibody reacts with Human, Mouse.
Application	ELISA, IF, IHC, WB
Clonality	Polyclonal
Formulation	Liquid in PBS containing 50% glycerol, 0.5% stabilizing protein and 0.02% sodium azide. *This antibody is supplied in a stabilized formulation. Compatibility with conjugation reactions depends on the chemistry of the conjugation method used. For conjugation methods that are not compatible with the stabilizing components present in this formulation, a carrier-free antibody format is required.
Storage Instructions	Store at -20°C for one year. For short term storage and frequent use, store at 4°C for up to one month. Avoid repeated freeze-thaw cycles.
Host	Rabbit
Uniprot ID	P48023

### Technical Details

Immunogen	The antiserum was produced against synthesized peptide derived from human FAS ligand. AA range:101-150
Cross Reactivity	No cross reactivity with other proteins.
Isotype	IgG
Form	Liquid
Concentration	1 mg/ml
Purification	The antibody was affinity-purified from rabbit antiserum by affinity-chromatography using epitope-specific immunogen.
Suggested Dilutions	WB 1:500-1:2000 IHC 1:100-1:300 IF 1:200-1:1000 ELISA 1:40000

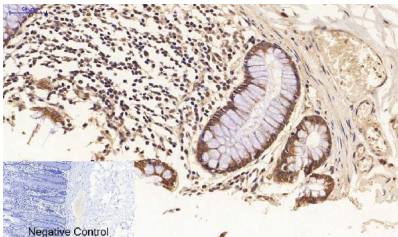


## Anti-FAS-L FASLG Antibody (A00925-1) Images

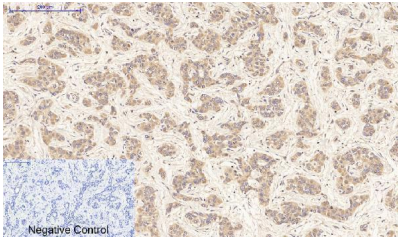


Western Blot (WB) analysis of Hepg2 and 293 using FAS-L Polyclonal Antibody, (STJ93042)

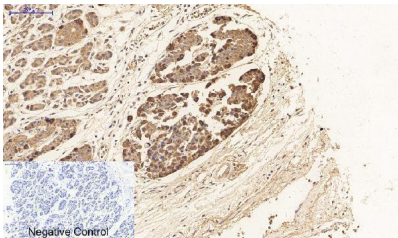
Western blotting validation for Anti-FAS-L FASLG Antibody A00925-1 Western blot (WB) analysis of FAS-L polyclonal antibody. Electrophoresis was performed on a SDS-PAGE gel. To determine SDS-PAGE gel concentration



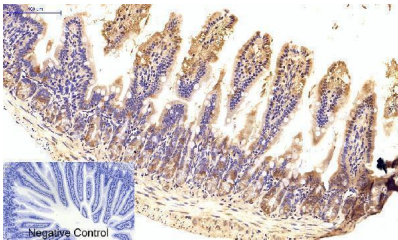
Immunohistochemistry validation of FASLG using Anti-FAS-L FASLG Antibody (A00925-1). Immunohistochemical analysis of human-colon tissue. Anti-FAS-L at 1:200 (4°C)



Immunohistochemistry validation of FASLG using Anti-FAS-L FASLG Antibody (A00925-1). Immunohistochemical analysis of human liver cancer tissue. Anti-FAS-L at 1:200 (4°C)



Immunohistochemistry validation of FASLG using Anti-FAS-L FASLG Antibody (A00925-1). Immunohistochemical analysis of human stomach cancer tissue. Anti-FAS-L at 1:200 (4°C)



Immunohistochemistry validation of FASLG using Anti-FAS-L FASLG Antibody (A00925-1). Immunohistochemical analysis of mouse colon tissue. Anti-FAS-L at 1:200 (4°C)

## 3 Publications Citing This Product

1. PubMed ID: -, Lanfen Chen,Wei Chen,Mengbei Zhang et al.Comparison of therapeutic effects of melatonin by two different routes in focal cerebral ischemic rats.Journal of Neurorestoratology 2019,07(01):47-53.
2. PubMed ID: -, Yan Zhang,Linchao Zhang,JiaLu Bao et al.Perfluorooctanoic Acid Exposure in Early Pregnancy Induces Oxidative Stress in The

Uterus and Liver in Mice,13 February 2021,PREPRINT (Version 1) available at Research Square [<https://doi.org/10.21203/rs.3.rs-160447>]

3. PubMed ID: 33513976, Ferguson Bennit HR,Gonda A,Kabagwira J,Oppegard L,Chi D,Licero Campbell J,De Leon M,Wall NR.Natural Killer Cell Phenotype and Functionality Affected by Exposure to Extracellular Survivin and Lymphoma-Derived Exosomes.Int J Mol Sci.2021 Jan 27;22(3):1255.d

Visit [bosterbio.com/anti-fas-l-faslg-antibody-a00925-1-boster.html](https://bosterbio.com/anti-fas-l-faslg-antibody-a00925-1-boster.html) to see all 3 publications.

## Submit a product review to Biocompare.com

Submit a review of this product to Biocompare.com to receive a \$20 Amazon.com giftcard! Your reviews help your fellow scientists make the right decisions. Thank you for your contribution.



Anti-FAS-L FASLG Antibody

For Research Use Only. Not for use in diagnostic procedures.