

Anti-Glutathione Synthetase GSS Antibody

Catalog Number: A00928-1

About GSS

Links covalently the heme group to the apoprotein of cytochrome c By similarity.

Schaefer L., Genomics 34:166-172(1996).

van den Veyver I.B., Am. J. Med. Genet. 78:179-181(1998).

The MGC Project Team; Genome Res. 14:2121-2127(2004)

Overview

Product Name	Anti-Glutathione Synthetase GSS Antibody
Reactive Species	Human, Mouse, Rat
Description	Boster Bio Anti-Glutathione Synthetase GSS Antibody catalog # A00928-1. Tested in WB,ICC,IF,IHC,Flow Cytometry applications. This antibody reacts with Human,Mouse,Rat.
Application	Flow Cytometry, IF, IHC, ICC, WB
Clonality	Polyclonal
Formulation	Rabbit IgG, 1mg/ml in PBS with 0.02% sodium azide, 50% glycerol, pH7.2
Storage Instructions	Store at -20°C for one year. For short term storage and frequent use, store at 4°C for up to one month. Avoid repeated freeze-thaw cycles.
Host	Rabbit
Uniprot ID	P48637

Technical Details

Immunogen	Synthesized peptide derived from human GDF-8.
Predicted Reactive Species	Boar, Bovine, Canine, Golden Hamster
Cross Reactivity	No cross reactivity with other proteins.
Isotype	IgG
Form	Liquid
Concentration	1 mg/ml
Purification	ProA affinity purified
Suggested Dilutions	Dilute the sample so that the expected range of concentrations fall within the detection range of this

kit.

If the expected range of concentration is unknown, a pilot test should be conducted to decide the optimal dilution ratio for your samples.

Some PubMed article(s) citing the expression level of this target are as follows:

Boster Bio's internal QC testing used:

WB: 1:500-1:1,000

ICC: 1:50-1:200

IHC: 1:50-1:200

FC: 1:50-1:100

Anti-Glutathione Synthetase GSS Antibody (A00928-1) Images

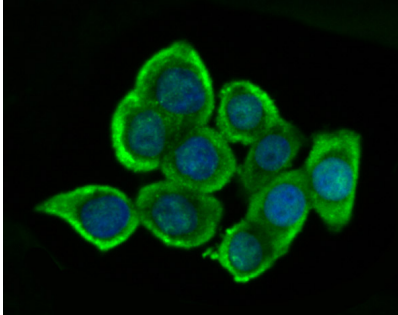


Figure 2. Immunocytochemistry staining of GSS using Anti-Glutathione Synthetase GSS Antibody (A00928-1).

ICC staining Glutathione Synthetase in LOVO cells (green). The nuclear counter stain is DAPI (blue). Cells were fixed in paraformaldehyde

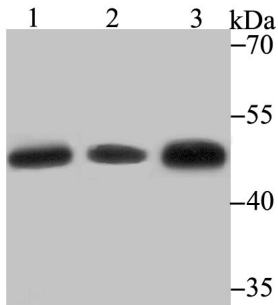


Figure 1. Western blotting validation for Anti-Glutathione Synthetase GSS Antibody A00928-1

Western blot analysis of Glutathione Synthetase on different lysates using anti-Glutathione Synthetase antibody at 1/500 dilution. Positive control: Lane 1: SiHa Lane 2: Mouse colon Lane 3: Rat liver
Electrophoresis was performed on a SDS-PAGE gel. To determine SDS-PAGE gel concentration

Submit a product review to Biocompare.com

Submit a review of this product to Biocompare.com to receive a \$20 Amazon.com giftcard! Your reviews help your fellow scientists make the right decisions. Thank you for your contribution.



Anti-Glutathione Synthetase GSS Antibody