

Anti-Protein C-ets-1 ETS1 Antibody

Catalog Number: A00931

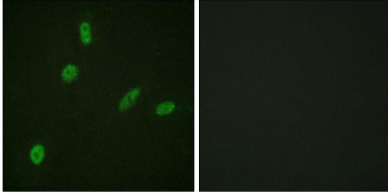
Overview

Product Name	Anti-Protein C-ets-1 ETS1 Antibody
Reactive Species	Human, Mouse, Rat
Description	Boster Bio Anti-Protein C-ets-1 ETS1 Antibody catalog # A00931. Tested in WB, IHC, IF, ELISA applications. This antibody reacts with Human, Mouse, Rat.
Application	ELISA, IF, IHC, WB
Clonality	Polyclonal
Formulation	Liquid in PBS containing 50% glycerol, 0.5% stabilizing protein and 0.02% sodium azide. *This antibody is supplied in a stabilized formulation. Compatibility with conjugation reactions depends on the chemistry of the conjugation method used. For conjugation methods that are not compatible with the stabilizing components present in this formulation, a carrier-free antibody format is required.
Storage Instructions	Store at -20°C for one year. For short term storage and frequent use, store at 4°C for up to one month. Avoid repeated freeze-thaw cycles.
Host	Rabbit
Uniprot ID	P14921

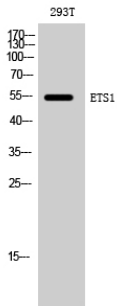
Technical Details

Immunogen	The antiserum was produced against synthesized peptide derived from human ETS1. AA range:11-60
Cross Reactivity	No cross reactivity with other proteins.
Isotype	IgG
Form	Liquid
Concentration	1 mg/ml
Purification	Immunogen affinity purified
Suggested Dilutions	WB 1:500-1:2000 IHC 1:100-1:300 IF 1:200-1:1000 ELISA 1:5000

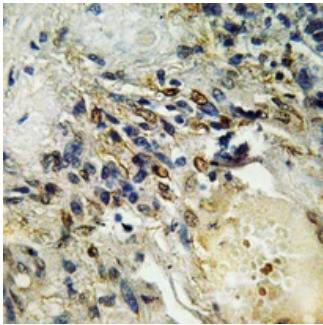
Anti-Protein C-ets-1 ETS1 Antibody (A00931) Images



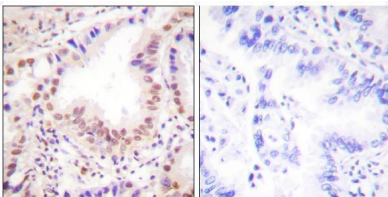
Immunofluorescence analysis of HeLa cells, using ETS1 Antibody. The picture on the right is blocked with the synthesized peptide.



Western Blot analysis of 293T cells using ETS1 Polyclonal Antibody diluted at 1:1000 cells nucleus extracted by Minute TM Cytoplasmic and Nuclear Fractionation kit .



Immunohistochemical analysis of paraffin-embedded Human breast cancer. Antibody was diluted at 1:100 (4° overnight). High-pressure and temperature Tris-EDTA, pH8.0 was used for antigen retrieval.



Immunohistochemistry analysis of paraffin-embedded human lung carcinoma tissue, using ETS1 Antibody. The picture on the right is blocked with the synthesized peptide.

1 Publications Citing This Product

1. PubMed ID: 26658785, Luteolin Inhibits Ischemia/Reperfusion-Induced Myocardial Injury in Rats via Downregulation of microRNA-208b-3p

Visit bosterbio.com/anti-ets1-antibody-a00931-boster.html to see all 1 publications.

Submit a product review to Biocompare.com

Submit a review of this product to Biocompare.com to receive a \$20 Amazon.com giftcard! Your reviews help your fellow scientists make the right decisions. Thank you for your contribution.



Anti-Protein C-ets-1 ETS1 Antibody

For Research Use Only. Not for use in diagnostic procedures.