

## Anti-Protein C-ets-1 ETS1 Antibody

Catalog Number: A00931-4

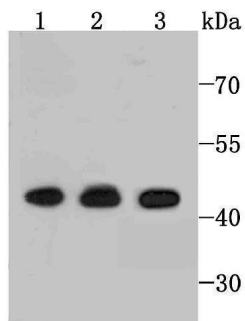
### Overview

Product Name	Anti-Protein C-ets-1 ETS1 Antibody
Reactive Species	Human, Mouse
Description	Boster Bio Anti-Protein C-ets-1 ETS1 Antibody catalog # A00931-4. Tested in WB,IHC,Flow Cytometry applications. This antibody reacts with Human,Mouse.
Application	Flow Cytometry, IHC, WB
Clonality	Polyclonal
Formulation	Rabbit IgG, 1mg/ml in PBS with 0.02% sodium azide, 50% glycerol, pH7.2
Storage Instructions	Store at -20°C for one year. For short term storage and frequent use, store at 4°C for up to one month. Avoid repeated freeze-thaw cycles.
Host	Rabbit
Uniprot ID	P14921

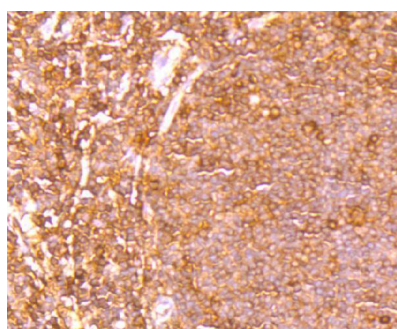
### Technical Details

Immunogen	Recombinant protein
Cross Reactivity	No cross reactivity with other proteins.
Isotype	IgG
Form	Liquid
Concentration	1 mg/ml
Purification	ProA affinity purified
Suggested Dilutions	WB: 1:500-1:2,000 IHC: 1:50-1:200 FC: 1:50-1:100

## Anti-Protein C-ets-1 ETS1 Antibody (A00931-4) Images



Western blot analysis of ETS1 on different cell using anti-ETS1 antibody at 1/1,000 dilution. Positive control □ Line1: Jurkat Line2: K562 Line3: HepG2



Immunohistochemical analysis of paraffin-embedded human tonsil tissue using anti-ETS1 antibody. Counter stained with hematoxylin.

### Submit a product review to [Biocompare.com](https://www.biocompare.com)

Submit a review of this product to [Biocompare.com](https://www.biocompare.com) to receive a \$20 Amazon.com giftcard! Your reviews help your fellow scientists make the right decisions. Thank you for your contribution.



Anti-Protein C-ets-1 ETS1 Antibody

For Research Use Only. Not for use in diagnostic procedures.