

## Anti-SHP-1 (phospho-Y536) PTPN6 Antibody

Catalog Number: A00938Y536

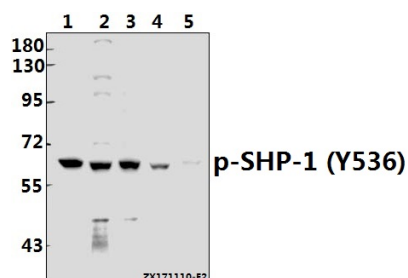
### Overview

Product Name	Anti-SHP-1 (phospho-Y536) PTPN6 Antibody
Reactive Species	Human, Mouse, Rat
Description	Boster Bio Anti-SHP-1 (phospho-Y536) PTPN6 Antibody catalog # A00938Y536. Tested in WB,IHC applications. This antibody reacts with Human,Mouse,Rat.
Application	IHC, WB
Clonality	Polyclonal
Formulation	Rabbit IgG, 1mg/ml in PBS with 0.02% sodium azide, 50% glycerol, pH7.2
Storage Instructions	Store at -20°C for one year. For short term storage and frequent use, store at 4°C for up to one month. Avoid repeated freeze-thaw cycles.
Host	Rabbit
Uniprot ID	P29350

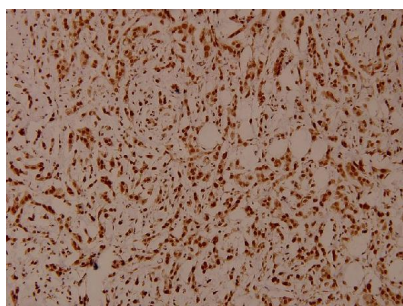
### Technical Details

Immunogen	Synthetic phosphopeptide derived from human SHP-1 around the phosphorylation site of Tyrosine 536.
Cross Reactivity	No cross reactivity with other proteins.
Isotype	IgG
Form	Liquid
Concentration	1 mg/ml
Purification	The antibody was affinity-purified from rabbit antiserum by affinity-chromatography using epitope-specific immunogen and the purity is > 95% (by SDS-PAGE).
Suggested Dilutions	WB: 1:500-1:1000 IHC: 1:50-1:200

## Anti-SHP-1 (phospho-Y536) PTPN6 Antibody (A00938Y536) Images



Western blot (WB) analysis of SHP-1 (phospho-Y536) polyclonal antibody at 1:500 dilution Lane1:MCF-7 whole cell lysate(40ug) Lane2:H1792 whole cell lysate(40ug) Lane3:A549 whole cell lysate(40ug) Lane4:3T3-L1 whole cell lysate(40ug) Lane5:H9C2 whole cell lysate(40ug)



Immunohistochemistry (IHC) analyzes of SHP-1 (phospho-Y536) polyclonal antibody in paraffin-embedded human breast carcinoma tissue at 1:100.

### Submit a product review to [Biocompare.com](https://www.biocompare.com)

Submit a review of this product to [Biocompare.com](https://www.biocompare.com) to receive a \$20 Amazon.com giftcard! Your reviews help your fellow scientists make the right decisions. Thank you for your contribution.



Anti-SHP-1 (phospho-Y536) PTPN6 Antibody

For Research Use Only. Not for use in diagnostic procedures.