

## Anti-TREX1 Antibody

Catalog Number: A00940

### About TREX1

Trex1 is the major human 3' to 5' exonuclease which is required for checkpoint signaling after DNA damage. It is ubiquitously expressed, binds to single stranded DNA coated with replication protein A that accumulates at sites of DNA damage and recruits the ataxia telangiectasia and Rad3 related protein (ATR), a checkpoint kinase, to sites of DNA damage and replication stress. Trex1 is required for ATR expression. This gene uses two different open reading frames. The upstream ORF encodes proteins which interact with ATR and localize to intranuclear foci induced by DNA damage and are essential components of the DNA damage checkpoint. The downstream ORF encodes proteins with 3' to 5' exonuclease activity and may be a subunit of human DNA polymerase III. Mutations in this gene result in Aicardi-Goutieres syndrome, chilblain lupus, and Cree encephalitis.

### Overview

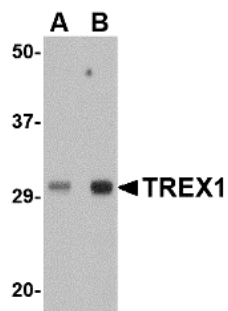
Product Name	Anti-TREX1 Antibody
Reactive Species	Human, Mouse, Rat
Description	Boster Bio Anti-TREX1 Antibody (Catalog # A00940). Tested in ELISA, WB, IHC-P, IF applications. This antibody reacts with Human, Mouse, Rat.
Application	ELISA, IF, IHC-P, WB
Clonality	Polyclonal
Formulation	TREX1 Antibody is supplied in PBS containing 0.02% sodium azide.
Storage Instructions	TREX1 antibody can be stored at 4°C for three months and -20°C, stable for up to one year. Avoid repeated freeze-thaw cycles. Antibodies should not be exposed to prolonged high temperatures.
Host	Rabbit
Uniprot ID	Q9NSU2

### Technical Details

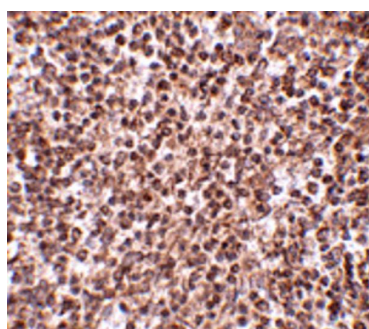
Immunogen	TREX1 antibody was raised against a 15 amino acid synthetic peptide near the center of human TREX1. The immunogen is located within amino acids 220 - 270 of TREX1.
Predicted Reactive Species	Bovine
Cross Reactivity	TREX1 antibody will not cross-react with the related protein TREX2. At least three isoforms of TREX1 are known to exist; this antibody will recognize all three isoforms.
Isotype	IgG
Form	Liquid

Concentration	1 mg/mL
Purification	TREX1 Antibody is affinity chromatography purified via peptide column.
Suggested Dilutions	TREX1 antibody can be used for detection of TREX1 by Western blot at 0.5 and 1 ug/mL. Antibody can also be used for immunohistochemistry starting at 2.5 ug/mL. For immunofluorescence start at 20 ug/mL. Antibody validated: Western Blot in human samples; Immunohistochemistry in human samples and Immunofluorescence in human samples. All other applications and species not yet tested. Optimal dilutions for each application should be determined by the researcher.

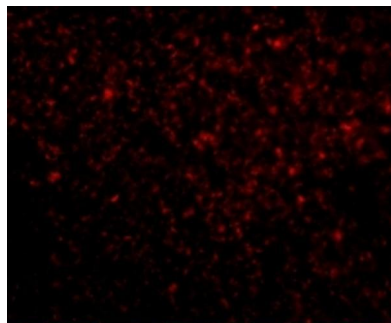
## Anti-TREX1 Antibody (A00940) Images



Western blot analysis of TREX1 in human spleen tissue lysate with TREX1 antibody at (A) 0.5 and (B) 1 ug/mL.



Immunohistochemistry of TREX1 in human spleen tissue with TREX1 antibody at 2.5 ug/mL.



Immunofluorescence of TREX1 in Human Spleen tissue with TREX1 antibody at 20 ug/mL.

### Submit a product review to [Biocompare.com](https://www.biocompare.com)

Submit a review of this product to [Biocompare.com](https://www.biocompare.com) to receive a \$20 Amazon.com giftcard! Your reviews help your fellow scientists make the right decisions. Thank you for your contribution.



Anti-TREX1 Antibody

For Research Use Only. Not for use in diagnostic procedures.