

Anti-TREX1 Antibody

Catalog Number: A00940-1

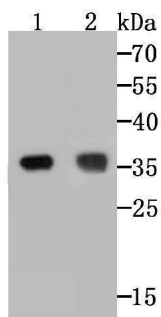
Overview

Product Name	Anti-TREX1 Antibody
Reactive Species	Human
Description	Boster Bio Anti-TREX1 Antibody catalog # A00940-1. Tested in WB,ICC,IF,IHC applications. This antibody reacts with Human.
Application	IF, IHC, ICC, WB
Clonality	Polyclonal
Formulation	Rabbit IgG, 1mg/ml in PBS with 0.02% sodium azide, 50% glycerol, pH7.2
Storage Instructions	Store at -20°C for one year. For short term storage and frequent use, store at 4°C for up to one month. Avoid repeated freeze-thaw cycles.
Host	Rabbit
Uniprot ID	Q9NSU2

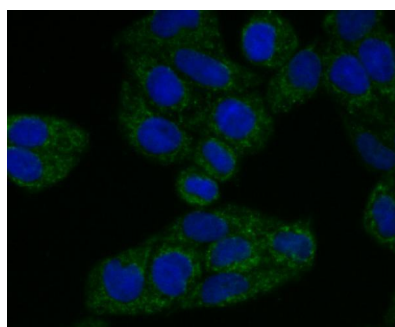
Technical Details

Immunogen	Recombinant protein within human TREX1 aa 100-300.
Cross Reactivity	No cross reactivity with other proteins.
Isotype	IgG
Form	Liquid
Concentration	1 mg/ml
Purification	ProA affinity purified
Suggested Dilutions	WB: 1:500-1:2,000 ICC: 1:50-1:200 IHC: 1:50-1:200

Anti-TREX1 Antibody (A00940-1) Images



Western blot analysis of TREX1 on different cell lysates using anti-TREX1 at 1/500 dilution. Positive control □ Line 1: A431
Line 2: SK-Br-3



ICC staining TREX1 in HeLa cells (green). The nuclear counter stain is DAPI (blue). Cells were fixed in paraformaldehyde, permeabilised with 0.25% Triton X100/PBS.

Submit a product review to Biocompare.com

Submit a review of this product to Biocompare.com to receive a \$20 Amazon.com giftcard! Your reviews help your fellow scientists make the right decisions. Thank you for your contribution.



Anti-TREX1 Antibody

For Research Use Only. Not for use in diagnostic procedures.