

## Anti-LT Beta R (R44) LTBR Antibody

Catalog Number: A00942-1

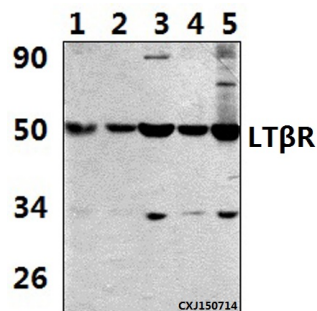
### Overview

Product Name	Anti-LT Beta R (R44) LTBR Antibody
Reactive Species	Human, Mouse, Rat
Description	Boster Bio Anti-LT Beta R (R44) LTBR Antibody catalog # A00942-1. Tested in WB,IF applications. This antibody reacts with Human,Mouse,Rat.
Application	IF, WB
Clonality	Polyclonal
Formulation	Rabbit IgG, 1mg/ml in PBS with 0.02% sodium azide, 50% glycerol, pH7.2
Storage Instructions	Store at -20°C for one year. For short term storage and frequent use, store at 4°C for up to one month. Avoid repeated freeze-thaw cycles.
Host	Rabbit
Uniprot ID	P36941

### Technical Details

Immunogen	Synthetic peptide, corresponding to amino acids 20-60 of Human LTbetaR.
Cross Reactivity	No cross reactivity with other proteins.
Isotype	IgG
Form	Liquid
Concentration	0.5-1mg/ml, actual concentration vary by lot. Use suggested dilution ratio to decide dilution procedure.
Purification	The antibody was affinity-purified from rabbit antiserum by affinity-chromatography using epitope-specific immunogen and the purity is > 95% (by SDS-PAGE).
Suggested Dilutions	WB: 1:500-1:1000 IF: 1:50-1:200

## Anti-LT Beta R (R44) LTBR Antibody (A00942-1) Images



Western blot (WB) analysis of LTbetaR (R44) polyclonal antibody at 1:500 dilution Lane1:Hela whole cell lysate(36ug) Lane2:RAW264.7 whole cell lysate(36ug) Lane3:PC12 whole cell lysate(36ug) Lane4:NIH-3T3 whole cell lysate(36ug) Lane5:HEK293T whole cell lysate(36ug)

### Submit a product review to Biocompare.com

Submit a review of this product to Biocompare.com to receive a \$20 Amazon.com giftcard! Your reviews help your fellow scientists make the right decisions. Thank you for your contribution.



Anti-LT Beta R (R44) LTBR Antibody

For Research Use Only. Not for use in diagnostic procedures.