

## Anti-Paired box protein Pax-8 PAX8 Antibody

Catalog Number: A00943-2

### Overview

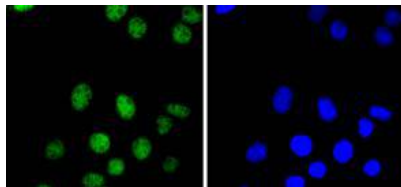
Product Name	Anti-Paired box protein Pax-8 PAX8 Antibody
Reactive Species	Human, Mouse, Rat
Description	Boster Bio Anti-Paired box protein Pax-8 PAX8 Antibody catalog # A00943-2. Tested in ICC/IF,IHC applications. This antibody reacts with Human,Mouse,Rat.
Application	IF, IHC, ICC
Clonality	Polyclonal
Formulation	Rabbit IgG, 1mg/ml in PBS with 0.02% sodium azide, 50% glycerol, pH7.2
Storage Instructions	Store at -20°C for one year. For short term storage and frequent use, store at 4°C for up to one month. Avoid repeated freeze-thaw cycles.
Host	Rabbit
Uniprot ID	Q06710

### Technical Details

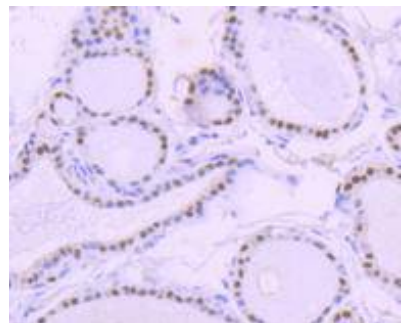
Immunogen	recombinant protein
Cross Reactivity	No cross reactivity with other proteins.
Isotype	IgG
Form	Liquid
Concentration	0.5-1mg/ml, actual concentration vary by lot. Use suggested dilution ratio to decide dilution procedure.
Purification	ProA affinity purified
Suggested Dilutions	ICC/IF: 1:50-1:200 IHC: 1:50-1:200

## Anti-Paired box protein Pax-8 PAX8 Antibody (A00943-2) Images

---



ICC staining PAX8 in SKOV-3 cells (green). The nuclear counter stain is DAPI (blue). Cells were fixed in paraformaldehyde, permeabilised with 0.25% Triton X100/PBS.



Immunohistochemical analysis of paraffin-embedded human thyroid tissue using anti-PAX8 antibody. Counter stained with hematoxylin.

---

### Submit a product review to Biocompare.com

Submit a review of this product to Biocompare.com to receive a \$20 Amazon.com giftcard! Your reviews help your fellow scientists make the right decisions. Thank you for your contribution.



Anti-Paired box protein Pax-8 PAX8 Antibody

For Research Use Only. Not for use in diagnostic procedures.