

Anti-ENA-78 CXCL5 Antibody

Catalog Number: A00946

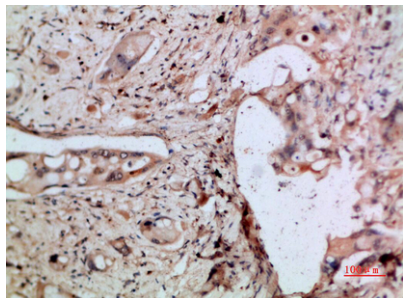
Overview

| | |
|----------------------|---|
| Product Name | Anti-ENA-78 CXCL5 Antibody |
| Reactive Species | Human, Mouse, Rat |
| Description | Boster Bio Anti-ENA-78 CXCL5 Antibody catalog # A00946. Tested in IHC, IF, ELISA applications. This antibody reacts with Human, Mouse, Rat. |
| Application | ELISA, IF, IHC |
| Clonality | Polyclonal |
| Formulation | PBS, pH 7.4, containing 0.02% sodium azide as Preservative and 50% Glycerol. |
| Storage Instructions | Store at -20°C for one year. For short term storage and frequent use, store at 4°C for up to one month. Avoid repeated freeze-thaw cycles. |
| Host | Rabbit |
| Uniprot ID | P42830 |

Technical Details

| | |
|---------------------|--|
| Immunogen | Synthetic peptide from human protein at AA range: 65-114 |
| Isotype | IgG |
| Form | Liquid |
| Concentration | 1 mg/ml |
| Purification | Immunogen affinity purified |
| Suggested Dilutions | IHC 1:50-200 ELISA 1:10000-20000 IF 1:50-200 |

Anti-ENA-78 CXCL5 Antibody (A00946) Images



Immunohistochemical analysis of paraffin-embedded human-pancreas-cancer, antibody was diluted at 1:200

Submit a product review to [Biocompare.com](https://www.biocompare.com)

Submit a review of this product to [Biocompare.com](https://www.biocompare.com) to receive a \$20 Amazon.com giftcard! Your reviews help your fellow scientists make the right decisions. Thank you for your contribution.



Anti-ENA-78 CXCL5 Antibody

For Research Use Only. Not for use in diagnostic procedures.