

## Anti-Na<sup>+</sup>/K<sup>+</sup>-ATPase alpha1 Antibody

Catalog Number: A00956

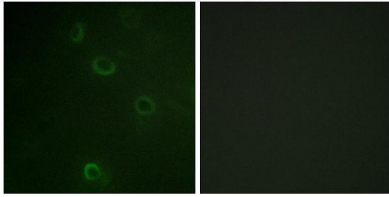
### Overview

Product Name	Anti-Na <sup>+</sup> /K <sup>+</sup> -ATPase alpha1 Antibody
Reactive Species	Human, Mouse, Rat
Description	Boster Bio Anti-Na <sup>+</sup> /K <sup>+</sup> -ATPase alpha1 Antibody catalog # A00956. Tested in WB, IHC, IF, ELISA applications. This antibody reacts with Human, Mouse, Rat.
Application	ELISA, IF, IHC, WB
Clonality	Polyclonal
Formulation	Liquid in PBS containing 50% glycerol, 0.5% stabilizing protein and 0.02% sodium azide. *This antibody is supplied in a stabilized formulation. Compatibility with conjugation reactions depends on the chemistry of the conjugation method used. For conjugation methods that are not compatible with the stabilizing components present in this formulation, a carrier-free antibody format is required.
Storage Instructions	Store at -20°C for one year. For short term storage and frequent use, store at 4°C for up to one month. Avoid repeated freeze-thaw cycles.
Host	Rabbit
Uniprot ID	P05023

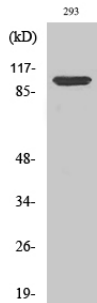
### Technical Details

Immunogen	The antiserum was produced against synthesized peptide derived from human ATPase. AA range:5-54
Isotype	IgG
Form	Liquid
Concentration	1 mg/ml
Purification	Immunogen affinity purified
Suggested Dilutions	WB 1:500-1:2000 IHC 1:100-1:300 IF 1:200-1:1000 ELISA 1:10000

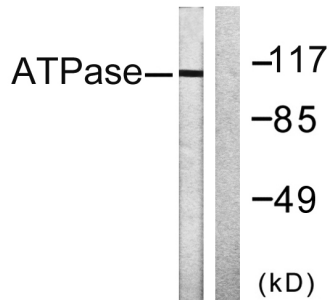
## Anti-Na<sup>+</sup>/K<sup>+</sup>-ATPase alpha1 Antibody (A00956) Images



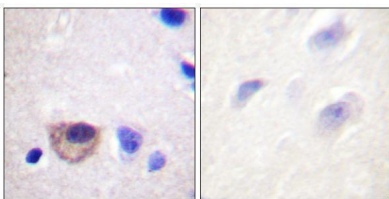
Immunofluorescence analysis of COS7 cells, using ATPase Antibody. The picture on the right is blocked with the synthesized peptide.



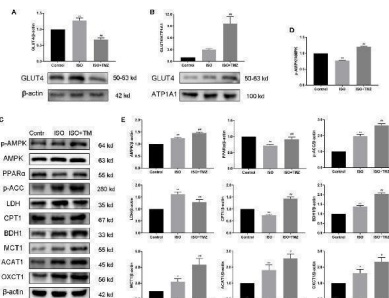
Western Blot analysis of 293 cells using Na<sup>+</sup>/K<sup>+</sup>-ATPase alpha1 Polyclonal Antibody diluted at 1:1000



Western blot analysis of lysates from 293 cells, treated with PMA 125ng/ml 30', using ATPase Antibody. The lane on the right is blocked with the synthesized peptide.



Immunohistochemistry analysis of paraffin-embedded human brain tissue, using ATPase Antibody. The picture on the right is blocked with the synthesized peptide.



Trimetazidine treatment promotes the protein expression related to myocardial substrate uptake and utilization in myocardial tissues of isoproterenol-induced heart failure rats. (A) Cytosolic protein was extracted and expression levels of cellular localization of GLUT4 were determined using Western blot. beta-actin was choice as an internal control. (B) Membrane protein was extracted and expression levels of cellular localization of GLUT4 were determined using Western blot. ATP1A1 was chosen as an internal control. (C) Western blot was used to evaluate metabolism-related protein expression. AMPK, p-AMPK, PPARalpha, p-ACC, LDH, CPT1, BDH1, MCT1, ACAT1, and OXCT1 were included. (D) Immunoblotting analysis was conducted to detect the ratio of p-AMPK/AMPK protein expression within myocardial tissues (n = 3). (E) The histogram indicated the

specific relevant quantitative results (n = 3). Data are represented as means ± SD, # P < 0.05, ## P < 0.01 compared with ISO group, \*P < 0.05, \*\*P < 0.01 compared with control group. p-AMPK, phospho-AMPK; AMPK, adenosine monophosphate-activated protein kinase; PPARalpha, peroxisome proliferator activated receptoralpha; p-ACC, phospho-acetyl-CoA carboxylase; LDH, lactate dehydrogenase; CPT1, carnitine palmitoyltransferase 1; BDH1, beta-hydroxybutyrate dehydrogenase 1; MCT1, monocarboxylate transporter 1; ACAT1, acetoacetyl-CoA thiolase 1; OXCT1(SCOT1), succinyl-CoA:3-ketoacid-CoA transferase1. Index in PubMed under a CC BY license. PMID: 32922293

## 1 Publications Citing This Product

1. PubMed ID: 32922293, Li H, Ma Z, Zhai Y, Lv C, Yuan P, Zhu F, Wei L, Li Q, Qi X. Trimetazidine Ameliorates Myocardial Metabolic Remodeling in Isoproterenol-Induced Rats Through Regulating Ketone Body Metabolism via Activating AMPK and PPAR alpha. Front Pharmacol. 2020 Aug 14;11:1255. doi:10.

Visit [bosterbio.com/anti-na-k-atpase-alpha1-antibody-a00956-boster.html](https://bosterbio.com/anti-na-k-atpase-alpha1-antibody-a00956-boster.html) to see all 1 publications.

## Submit a product review to Biocompare.com

Submit a review of this product to Biocompare.com to receive a \$20 Amazon.com giftcard! Your reviews help your fellow scientists make the right decisions. Thank you for your contribution.



Anti-Na<sup>+</sup>/K<sup>+</sup>-ATPase alpha1 Antibody

For Research Use Only. Not for use in diagnostic procedures.