

## Anti-Na<sup>+</sup>/K<sup>+</sup>-ATPase ATP1A1 Antibody

Catalog Number: A00956-3

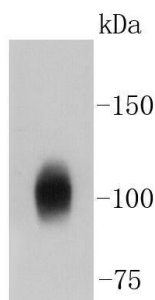
### Overview

Product Name	Anti-Na <sup>+</sup> /K <sup>+</sup> -ATPase ATP1A1 Antibody
Reactive Species	Human, Mouse, Rat
Description	Boster Bio Anti-Na <sup>+</sup> /K <sup>+</sup> -ATPase ATP1A1 Antibody catalog # A00956-3. Tested in WB, ICC/IF, IHC, Flow Cytometry applications. This antibody reacts with Human, Mouse, Rat.
Application	Flow Cytometry, IF, IHC, ICC, WB
Clonality	Polyclonal
Formulation	Rabbit IgG, 1mg/ml in PBS with 0.02% sodium azide, 50% glycerol, pH7.2
Storage Instructions	Store at -20°C for one year. For short term storage and frequent use, store at 4°C for up to one month. Avoid repeated freeze-thaw cycles.
Host	Rabbit
Uniprot ID	P05023

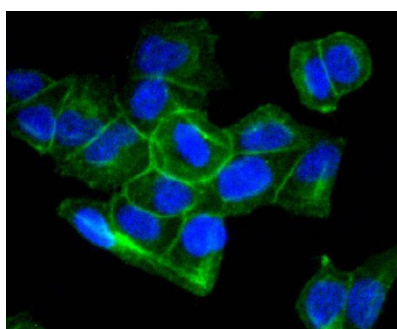
### Technical Details

Immunogen	recombinant protein
Cross Reactivity	No cross reactivity with other proteins.
Isotype	IgG
Form	Liquid
Concentration	1 mg/ml
Purification	ProA affinity purified
Suggested Dilutions	WB: 1:1,000-1:5,000 ICC: 1:50-1:200 IHC: 1:50-1:200 FC: 1:50-1:100

## Anti-Na<sup>+</sup>/K<sup>+</sup>-ATPase ATP1A1 Antibody (A00956-3) Images



Western blot analysis of Sodium Potassium ATPase on A549 cell lysates using anti-Sodium Potassium ATPase antibody at 1/1,000 dilution.



ICC staining Sodium Potassium ATPase in HeLa cells (green). The nuclear counter stain is DAPI (blue). Cells were fixed in paraformaldehyde, permeabilised with 0.25% Triton X100/PBS.

### Submit a product review to [Biocompare.com](https://www.biocompare.com)

Submit a review of this product to [Biocompare.com](https://www.biocompare.com) to receive a \$20 Amazon.com giftcard! Your reviews help your fellow scientists make the right decisions. Thank you for your contribution.



Anti-Na<sup>+</sup>/K<sup>+</sup>-ATPase ATP1A1 Antibody

For Research Use Only. Not for use in diagnostic procedures.