

Anti-Na⁺/K⁺-ATPase Alpha 1 (phospho-S16) ATP1A1 Antibody

Catalog Number: A00956S16

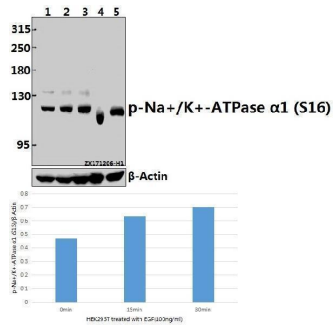
Overview

| | |
|----------------------|--|
| Product Name | Anti-Na ⁺ /K ⁺ -ATPase Alpha 1 (phospho-S16) ATP1A1 Antibody |
| Reactive Species | Human, Mouse, Rat |
| Description | Boster Bio Anti-Na ⁺ /K ⁺ -ATPase Alpha 1 (phospho-S16) ATP1A1 Antibody catalog # A00956S16. Tested in WB,IHC applications. This antibody reacts with Human,Mouse,Rat. |
| Application | IHC, WB |
| Clonality | Polyclonal |
| Formulation | Rabbit IgG, 1mg/ml in PBS with 0.02% sodium azide, 50% glycerol, pH7.2 |
| Storage Instructions | Store at -20°C for one year. For short term storage and frequent use, store at 4°C for up to one month. Avoid repeated freeze-thaw cycles. |
| Host | Rabbit |
| Uniprot ID | P05023 |

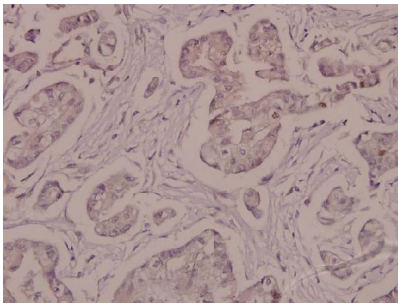
Technical Details

| | |
|---------------------|---|
| Immunogen | Synthetic phosphopeptide derived from human Na ⁺ /K ⁺ -ATPase alpha1 around the phosphorylation site of Serine 16. |
| Cross Reactivity | No cross reactivity with other proteins. |
| Isotype | IgG |
| Form | Liquid |
| Concentration | 1 mg/ml |
| Purification | The antibody was affinity-purified from rabbit antiserum by affinity-chromatography using epitope-specific immunogen and the purity is > 95% (by SDS-PAGE). |
| Suggested Dilutions | WB: 1:500-1:1000 IHC: 1:50-1:200 |

Anti-Na⁺/K⁺-ATPase Alpha 1 (phospho-S16) ATP1A1 Antibody (A00956S16) Images



Western blot (WB) analysis of p-Na⁺/K⁺-ATPase alpha1 (S16) pAb at 1:2000 dilution Lane1:HEK293T whole cell lysate Lane2:HEK293T treated with EGF(100ng/ml,15 minutes) whole cell lysate Lane3:HEK293T treated with EGF(100ng/ml,30 minutes) whole cell lysate Lane4:C6 whole cell lysate Lane5:NIH-3T3 whole cell lysate



Immunohistochemistry (IHC) analyzes of p-Na⁺/K⁺-ATPase alpha1 (S16) pAb in paraffin-embedded human breast carcinoma tissue at 1:50.

Submit a product review to Biocompare.com

Submit a review of this product to Biocompare.com to receive a \$20 Amazon.com giftcard! Your reviews help your fellow scientists make the right decisions. Thank you for your contribution.



Anti-Na⁺/K⁺-ATPase Alpha 1 (phospho-S16) ATP1A1 Antibody

For Research Use Only. Not for use in diagnostic procedures.