

Anti-Sodium Potassium ATPase alpha-1 ATP1A1 Antibody (Phospho-Tyr260)

Catalog Number: A00956Y260

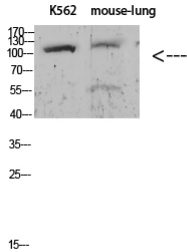
Overview

Product Name	Anti-Sodium Potassium ATPase alpha-1 ATP1A1 Antibody (Phospho-Tyr260)
Reactive Species	Human, Mouse, Rat
Description	Boster Bio Anti-Sodium Potassium ATPase alpha-1 ATP1A1 Antibody (Phospho-Tyr260) catalog # A00956Y260. Tested in ELISA, WB applications. This antibody reacts with Human, Mouse, Rat.
Application	ELISA, IHC, WB
Clonality	Polyclonal
Formulation	PBS, pH 7.4, containing 0.02% sodium azide as Preservative and 50% Glycerol.
Storage Instructions	Store at -20°C for one year. For short term storage and frequent use, store at 4°C for up to one month. Avoid repeated freeze-thaw cycles.
Host	Rabbit
Uniprot ID	P05023

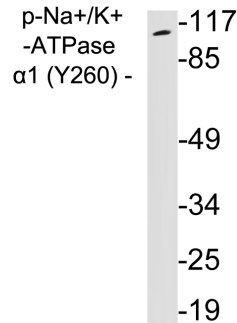
Technical Details

Immunogen	Synthetic peptide from human protein at AA range: 230-290
Cross Reactivity	No cross reactivity with other proteins.
Isotype	IgG
Form	Liquid
Concentration	1 mg/ml
Purification	The antibody was affinity-purified from rabbit serum by affinity-chromatography using specific immunogen.
Suggested Dilutions	WB 1:500-2000 IHC 1:50-300 ELISA 1:2000-20000

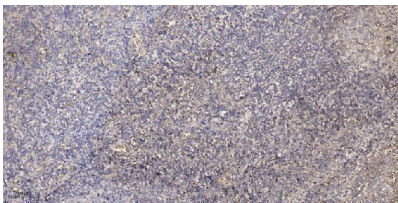
Anti-Sodium Potassium ATPase alpha-1 ATP1A1 Antibody (Phospho-Tyr260) (A00956Y260) Images



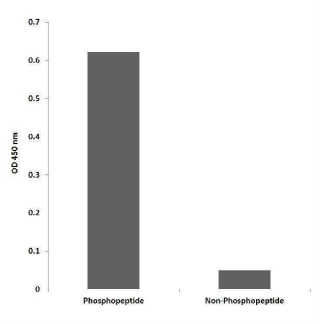
Western blot analysis of KB Hela lysate, antibody was diluted at 1000. Secondary antibody was diluted at 1:20000



Western blot analysis of lysates from 293 cells treated with PMA, using phospho-Na⁺/K⁺-ATPase alpha1 (Phospho-Tyr260) antibody.



Immunohistochemical analysis of paraffin-embedded human tonsil. 1, Antibody was diluted at 1:200 (4° overnight). 2, Tris-EDTA, pH9.0 was used for antigen retrieval. 3, Secondary antibody was diluted at 1:200 (room temperature, 45min).



Enzyme-Linked Immunosorbent Assay (Phospho-ELISA) for Immunogen Phosphopeptide (Phospho-left) and Non-Phosphopeptide (Phospho-right), using Na⁺/K⁺-ATPase alpha1 (Phospho-Tyr260) Antibody

Submit a product review to [Biocompare.com](https://www.biocompare.com)

Submit a review of this product to [Biocompare.com](https://www.biocompare.com) to receive a \$20 Amazon.com giftcard! Your reviews help your fellow scientists make the right decisions. Thank you for your contribution.



For Research Use Only. Not for use in diagnostic procedures.