

Anti-DNA pol lambda Antibody

Catalog Number: A00959

About POLL

Metabolizes several precarcinogens, drugs, and solvents to reactive metabolites. Inactivates a number of drugs and xenobiotics and also bioactivates many xenobiotic substrates to their hepatotoxic or carcinogenic forms.

Fernandez-Salguero P., Am. J. Hum. Genet. 57:651-660(1995).

Overview

Product Name	Anti-DNA pol lambda Antibody
Reactive Species	Human, Mouse, Rat
Description	Boster Bio Anti-DNA pol lambda Antibody catalog # A00959. Tested in ELISA, IHC, WB applications. This antibody reacts with Human, Mouse, Rat.
Application	ELISA, IHC, WB
Clonality	Polyclonal
Formulation	Liquid in PBS containing 50% glycerol, 0.5% BSA and 0.02% sodium azide.
Storage Instructions	Store at -20°C for one year. For short term storage and frequent use, store at 4°C for up to one month. Avoid repeated freeze-thaw cycles.
Host	Rabbit
Uniprot ID	Q9UGP5

Technical Details

Immunogen	Synthesized peptide derived from human DNA pol lambda
Predicted Reactive Species	Boar, Bovine, Canine, Golden Hamster
Cross Reactivity	No cross reactivity with other proteins.
Isotype	IgG
Form	Liquid
Concentration	1 mg/ml
Purification	The antibody was affinity-purified from rabbit antiserum by affinity-chromatography using epitope-specific immunogen.
Suggested Dilutions	Dilute the sample so that the expected range of concentrations fall within the detection range of this

kit.

If the expected range of concentration is unknown, a pilot test should be conducted to decide the optimal dilution ratio for your samples.

Some PubMed article(s) citing the expression level of this target are as follows:

Boster Bio's internal QC testing used:

WB 1:500-1:2000

IHC 1:100-1:300

ELISA 1:10000

Anti-DNA pol lambda Antibody (A00959) Images

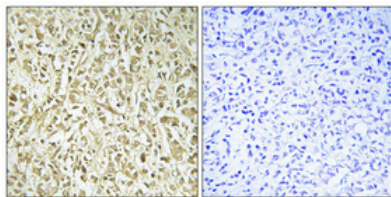


Figure 2. Immunohistochemistry validation of POLL using Anti-DNA pol lambda Antibody (A00959).

Immunohistochemical analysis of paraffin-embedded Human breast cancer. Antibody was diluted at 1:100 (4°C)

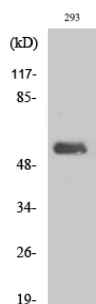


Figure 1. Western blotting validation for Anti-DNA pol lambda Antibody A00959

Western Blot (WB) analysis of specific cells using DNA pol lambda polyclonal antibody.

Electrophoresis was performed on a SDS-PAGE gel. To determine SDS-PAGE gel concentration

Submit a product review to Biocompare.com

Submit a review of this product to Biocompare.com to receive a \$20 Amazon.com giftcard! Your reviews help your fellow scientists make the right decisions. Thank you for your contribution.



Anti-DNA pol lambda Antibody