

## Anti-DNA Polymerase lambda/POLL Antibody Picoband™

Catalog Number: A00959-2

### About POLL

DNA polymerase lambda, also known as POLL, is a protein found in eukaryotes. In humans, it is encoded by the POLLA gene. POLL has 5-prime-deoxyribose-5-phosphate lyase activity and strand-displacement synthesis activity on gapped DNA substrates, suggesting that POLL participates in short- and long-patch base excision repair. POLL is widely expressed, with abundant expression in pachytene spermatocytes of testis and in ovary.

### Overview

Product Name	Anti-DNA Polymerase lambda/POLL Antibody Picoband™
Reactive Species	Human, Mouse, Rat
Description	Boster Bio Anti-DNA Polymerase lambda/POLL Antibody Picoband™ catalog # A00959-2. Tested in ELISA, Flow Cytometry, WB applications. This antibody reacts with Human, Mouse, Rat.
Application	ELISA, Flow Cytometry, WB
Clonality	Polyclonal
Formulation	Each vial contains 4mg Trehalose, 0.9mg NaCl, 0.2mg Na <sub>2</sub> HPO <sub>4</sub> , 0.05mg NaN <sub>3</sub> .
Storage Instructions	Store at -20°C for one year from date of receipt. After reconstitution, at 4°C for one month. It can also be aliquotted and stored frozen at -20°C for six months. Avoid repeated freeze-thaw cycles.
Host	Rabbit
Uniprot ID	Q9UGP5

### Technical Details

Immunogen	E. coli-derived human DNA Polymerase lambda recombinant protein (Position: K307-N407).
Predicted Reactive Species	Human
Recommended Detection Systems	Boster recommends Enhanced Chemiluminescent Kit with anti-Rabbit IgG (EK1002) for Western blot.
Cross Reactivity	No cross-reactivity with other proteins.
Isotype	Rabbit IgG
Form	Lyophilized
Concentration	Adding 0.2 ml of distilled water will yield a concentration of 500 ug/ml.
Purification	Immunogen affinity purified.

**Suggested Dilutions**

Dilute the sample so that the expected range of concentrations fall within the detection range of this kit.

If the expected range of concentration is unknown, a pilot test should be conducted to decide the optimal dilution ratio for your samples.

Some PubMed article(s) citing the expression level of this target are as follows:

Boster Bio's internal QC testing used:

Western blot, 0.1-0.5ug/ml

Flow Cytometry, 1-3ug/1x10<sup>6</sup> cells

Direct ELISA, 0.1-0.5ug/ml

## Anti-DNA Polymerase lambda/POLL Antibody Picoband™ (A00959-2) Images

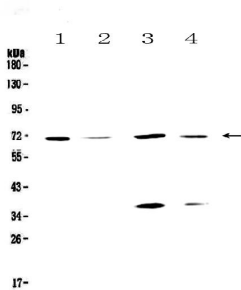


Figure 1. Western blot analysis of DNA Polymerase lambda using anti-DNA Polymerase lambda antibody (A00959-2). Electrophoresis was performed on a 5-20% SDS-PAGE gel at 70V (Stacking gel) / 90V (Resolving gel) for 2-3 hours. The sample well of each lane was loaded with 50ug of sample under reducing conditions.

Lane 1: human Hela whole cell lysates,  
Lane 2: human COLO-320 whole cell lysates,  
Lane 3: human MCF-7 whole cell lysates,  
Lane 4: human HepG2 whole cell lysates.

After Electrophoresis, proteins were transferred to a Nitrocellulose membrane at 150mA for 50-90 minutes. Blocked the membrane with 5% Non-fat Milk/ TBS for 1.5 hour at RT. The membrane was incubated with rabbit anti-DNA Polymerase lambda antigen affinity purified polyclonal antibody (Catalog # A00959-2) at 0.5 ug/mL overnight at 4°C, then washed with TBS-0.1%Tween 3 times with 5 minutes each and probed with a goat anti-rabbit IgG-HRP secondary antibody at a dilution of 1:10000 for 1.5 hour at RT. The signal is developed using an Enhanced Chemiluminescent detection (ECL) kit (Catalog # EK1002) with Tanon 5200 system. A specific band was detected for DNA Polymerase lambda at approximately 70KD. The expected band size for DNA Polymerase lambda is at 63KD.

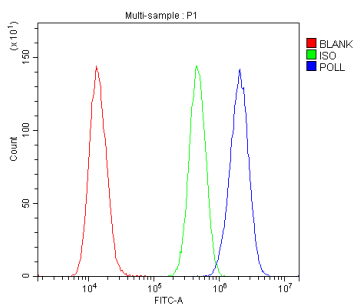


Figure 2. Flow Cytometry analysis of U2OS cells using anti-DNA Polymerase lambda antibody (A00959-2).

Overlay histogram showing U2OS cells stained with A00959-2 (Blue line). The cells were blocked with 10% normal goat serum. And then incubated with rabbit anti-DNA Polymerase lambda Antibody (A00959-2, 1ug/1x10<sup>6</sup> cells) for 30 min at 20°C. DyLight®488 conjugated goat anti-rabbit IgG (BA1127, 5-10ug/1x10<sup>6</sup> cells) was used as secondary antibody for 30 minutes at 20°C. Isotype control antibody (Green line) was rabbit IgG (1ug/1x10<sup>6</sup>) used under the same conditions. Unlabelled sample (Red line) was also used as a control.

**Submit a product review to Biocompare.com**

Submit a review of this product to Biocompare.com to receive a \$20 Amazon.com giftcard! Your reviews help your fellow scientists make the right decisions. Thank you for your contribution.



Anti-DNA Polymerase lambda/POLL Antibody™