

Anti-IL22 Antibody Picoband®

Catalog Number: A00963-2

About IL22

Interleukin-22 (IL-22), also known as ILTIF, is a protein that in humans is encoded by the IL22 gene. IL-22 is a member of a group of cytokines called the IL-10 family or IL-10 superfamily, a class of potent mediators of cellular inflammatory responses. Using FISH, the IL22 gene is mapped to chromosome 12q15, close to the IFNG and the herpesvirus saimiri-induced AK155 genes. IL-22 can contribute to immune disease through the stimulation of inflammatory responses, S100s and defensins. It also promotes hepatocyte survival in the liver and epithelial cells in the lung and gut similar to IL-10. In some contexts, the pro-inflammatory versus tissue-protective functions of IL-22 are regulated by the often co-expressed cytokine IL-17A.

Overview

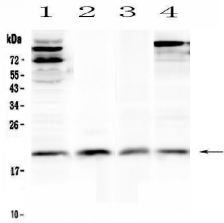
Product Name	Anti-IL22 Antibody Picoband®
Reactive Species	Human, Mouse, Rat
Description	Boster Bio Anti-IL22 Antibody Picoband® catalog # A00963-2. Tested in WB applications. This antibody reacts with Human, Mouse, Rat. The brand Picoband indicates this is a premium antibody that guarantees superior quality, high affinity, and strong signals with minimal background in Western blot applications. Only our best-performing antibodies are designated as Picoband, ensuring unmatched performance.
Application	WB
Clonality	Polyclonal
Formulation	Each vial contains antibody formulated with stabilizing components, 0.9 mg NaCl, 0.2 mg Na ₂ HPO ₄ , and 0.05 mg Na ₃ N. *This antibody is supplied in a stabilized formulation. Compatibility with conjugation reactions depends on the chemistry of the conjugation method used. For conjugation methods that are not compatible with the stabilizing components present in this formulation, a carrier-free antibody format is required.
Storage Instructions	Store at -20°C for one year from date of receipt. After reconstitution, at 4°C for one month. It can also be aliquotted and stored frozen at -20°C for six months. Avoid repeated freeze-thaw cycles.
Host	Rabbit
Uniprot ID	Q9GZX6

Technical Details

Immunogen	A synthetic peptide corresponding to a sequence at the C-terminus of human IL22, which shares 85.4% and 82.9% amino acid (aa) sequence identity with mouse and rat IL22, respectively.
Recommended Detection Systems	Boster recommends Enhanced Chemiluminescent Kit with anti-Rabbit IgG (EK1002) for Western

	blot.
Cross Reactivity	No cross-reactivity with other proteins.
Isotype	Rabbit IgG
Form	Lyophilized
Concentration	Adding 0.2 ml of distilled water will yield a concentration of 500 ug/ml.
Purification	Immunogen affinity purified.
Suggested Dilutions	Western blot, 0.1-0.5ug/ml

Anti-IL22 Antibody Picoband® (A00963-2) Images



Western blot analysis of IL22 using anti-IL22 antibody (A00963-2). Electrophoresis was performed on a 5-20% SDS-PAGE gel at 70V (Stacking gel) / 90V (Resolving gel) for 2-3 hours. The sample well of each lane was loaded with 50ug of sample under reducing conditions. Lane 1: human Hela whole cell lysates, Lane 2: human placenta tissue lysates, Lane 3: rat thymus tissue lysates, Lane 4: mouse thymus tissue lysates. After Electrophoresis, proteins were transferred to a Nitrocellulose membrane at 150mA for 50-90 minutes. Blocked the membrane with 5% Non-fat Milk/TBS for 1.5 hour at RT. The membrane was incubated with rabbit anti-IL22 antigen affinity purified polyclonal antibody (Catalog # A00963-2) at 0.5 ug/mL overnight at 4°C, then washed with TBS-0.1%Tween 3 times with 5 minutes each and probed with a goat anti-rabbit IgG-HRP secondary antibody at a dilution of 1:10000 for 1.5 hour at RT. The signal is developed using an Enhanced Chemiluminescent detection (ECL) kit (Catalog # EK1002) with Tanon 5200 system. A specific band was detected for IL22 at approximately 20KD. The expected band size for IL22 is at 20KD.

Submit a product review to [Biocompare.com](https://www.biocompare.com)

Submit a review of this product to [Biocompare.com](https://www.biocompare.com) to receive a \$20 Amazon.com giftcard! Your reviews help your fellow scientists make the right decisions. Thank you for your contribution.



Anti-IL22 Antibody

For Research Use Only. Not for use in diagnostic procedures.