

## Anti-IL-22 Antibody

Catalog Number: A00963-4

### About IL22

Interleukin-22 (IL-22) is a cytokine important for the modulation of tissue responses during inflammation (1). Unlike the distantly related IL-10, IL-22 does not inhibit the production of proinflammatory cytokines in monocytes in response to LPS, but it has some inhibitory effects on IL-4 production from Th2 T cells. IL-22 is expressed by both the adaptive arm of the immune system such as CD4 T cell subsets including Th17 cells, as well as by innate lymphocytes such as NK and LTI-like cells (2). IL-22 is highly expressed in several chronic inflammatory conditions, and studies suggest that IL-22 plays both inflammatory and protective roles (3).

### Overview

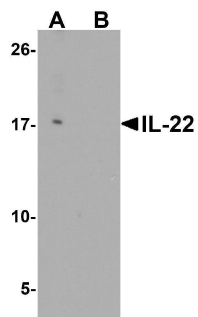
Product Name	Anti-IL-22 Antibody
Reactive Species	Human, Mouse, Rat
Description	Boster Bio Anti-IL-22 Antibody (Catalog # A00963-4). Tested in ELISA, WB, ICC, IF applications. This antibody reacts with Human, Mouse, Rat.
Application	ELISA, IF, ICC, WB
Clonality	Polyclonal
Formulation	IL-22 antibody is supplied in PBS containing 0.02% sodium azide.
Storage Instructions	IL-22 antibody can be stored at 4°C for three months and -20°C, stable for up to one year.
Host	Rabbit
Uniprot ID	Q9GZX6

### Technical Details

Immunogen	IL-22 antibody was raised against a 17 amino acid peptide near the center of human IL-22. The immunogen is located within amino acids 90 - 140 of IL-22.
Predicted Reactive Species	Bovine
Cross Reactivity	IL-22 antibody is human, mouse, and rat reactive. Multiple isoforms of IL-22 are known to exist.
Isotype	IgG
Form	Liquid
Concentration	1 mg/mL
Purification	IL-22 antibody is affinity chromatography purified via peptide column.
Suggested Dilutions	IL-22 antibody can be used for detection of IL-22 by Western blot at 0.5 ug/ml. Antibody can also be

used for Immunocytochemistry starting at 5 ug/mL. For immunofluorescence start at 20 ug/mL.  
Antibody validated: Western Blot in human samples; Immunocytochemistry in human samples and  
Immunofluorescence in human samples. All other applications and species not yet tested. Optimal  
dilutions for each application should be determined by the researcher.

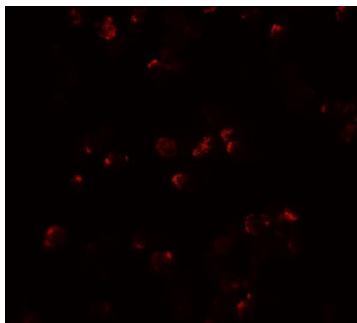
## Anti-IL-22 Antibody (A00963-4) Images



Western blot analysis of IL-22 in HeLa cell lysate with IL-22 antibody at 0.5 ug/ml in (A) the absence and (B) the presence of blocking peptide.



Immunocytochemistry of IL-22 in HeLa cells with IL-22 antibody at 5 ug/mL.



Immunofluorescence of IL-22 in HeLa cells with IL-22 antibody at 20 ug/mL.

### Submit a product review to [Biocompare.com](https://www.biocompare.com)

Submit a review of this product to [Biocompare.com](https://www.biocompare.com) to receive a \$20 Amazon.com giftcard! Your reviews help your fellow scientists make the right decisions. Thank you for your contribution.



### Anti-IL-22 Antibody

For Research Use Only. Not for use in diagnostic procedures.