

Anti-4E-BP1(Ab-45) EIF4EBP1 Antibody

Catalog Number: A00968

About EIF4EBP1

4E-BP1 encodes one member of a family of translation repressor proteins. The protein directly interacts with eukaryotic translation initiation factor 4E (eIF4E), which is a limiting component of the multisubunit complex that recruits 40S ribosomal subunits to the 5' end of mRNAs. Interaction of this protein with eIF4E inhibits complex assembly and represses translation. This protein is phosphorylated in response to various signals including UV irradiation and insulin signaling, resulting in its dissociation from eIF4E and activation of mRNA translation.

Gingras AC, et al. (1998) Genes Dev 12(4): 502-513.

Brugarolas J, et al. (2004) Genes Dev 18(23): 2893-2904.

Kumar V, et al. (2000) EMBO J 19(5): 1087-1097.

Moody CA, et al. (2005) J Virol 79(9): 5499-5506.

Burnett PE, et al. (1998) Proc Natl Acad Sci U S A 95(4): 1432-1437.

Overview

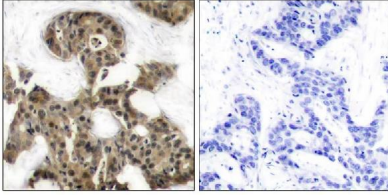
Product Name	Anti-4E-BP1(Ab-45) EIF4EBP1 Antibody
Reactive Species	Human, Mouse, Rat
Description	Boster Bio Anti-4E-BP1(Ab-45) EIF4EBP1 Antibody (Catalog # A00968). Tested in WB, IHC, IF applications. This antibody reacts with Human, Mouse, Rat.
Application	IF, IHC, WB
Clonality	Polyclonal
Formulation	Supplied at 1.0mg/mL in phosphate buffered saline (without Mg ²⁺ and Ca ²⁺), pH 7.4, 150mM NaCl, 0.02% sodium azide and 50% glycerol.
Storage Instructions	Store at -20°C for one year. For short term storage and frequent use, store at 4°C for up to one month. Avoid repeated freeze-thaw cycles.
Host	Rabbit
Uniprot ID	Q13541

Technical Details

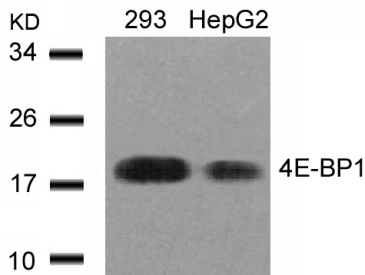
Immunogen	Peptide sequence around aa.44~48 (S-T-T-P-G) derived from Human 4E-BP1.
Predicted Reactive Species	Boar, Bovine, Canine, Golden Hamster
Cross Reactivity	No cross reactivity with other proteins.
Isotype	IgG

Form	Liquid
Concentration	1 mg/ml
Purification	Antibodies were produced by immunizing rabbits with synthetic peptide and KLH conjugates. Antibodies were purified by affinity-chromatography using epitope-specific peptide.
Suggested Dilutions	Predicted MW: 18kd Western blotting: 1:500~1:1000 Immunohistochemistry: 1:50~1:100 Immunofluorescence: 1:100~1:200

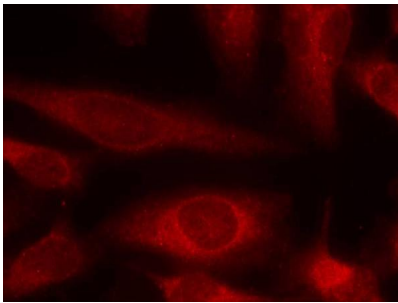
Anti-4E-BP1(Ab-45) EIF4EBP1 Antibody (A00968) Images



Immunohistochemical analysis of paraffin-embedded human breast carcinoma tissue using 4E-BP1(Ab-45) antibody A00968(left) or the same antibody preincubated with blocking peptide(right).



Western blot analysis of extracts from 293 and HepG2 cells using 4E-BP1(Ab-45) antibody A00968.



Immunofluorescence staining of methanol-fixed HeLa cells using 4E-BP1(Ab-45) antibody A00968.

Submit a product review to Biocompare.com

Submit a review of this product to Biocompare.com to receive a \$20 Amazon.com giftcard! Your reviews help your fellow scientists make the right decisions. Thank you for your contribution.



Anti-4E-BP1(Ab-45) EIF4EBP1 Antibody