

## Anti-4E-BP1 (phospho-T36) EIF4EBP1 Antibody

Catalog Number: A00968T36

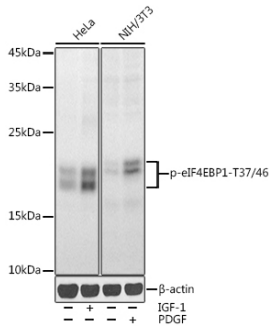
### Overview

Product Name	Anti-4E-BP1 (phospho-T36) EIF4EBP1 Antibody
Reactive Species	Human, Mouse, Rat
Description	Boster Bio Anti-4E-BP1 (phospho-T36) EIF4EBP1 Antibody catalog # A00968T36. Tested in WB,IHC applications. This antibody reacts with Human,Mouse,Rat.
Application	IHC, WB
Clonality	Polyclonal
Formulation	Rabbit IgG, 1mg/ml in PBS with 0.02% sodium azide, 50% glycerol, pH7.2
Storage Instructions	Store at -20°C for one year. For short term storage and frequent use, store at 4°C for up to one month. Avoid repeated freeze-thaw cycles.
Host	Rabbit
Uniprot ID	Q13541

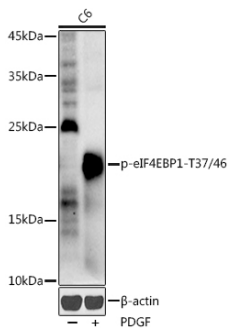
### Technical Details

Immunogen	A synthetic phosphorylated peptide around T37 & T46 of human eIF4EBP1(NP_004086.1).
Cross Reactivity	No cross reactivity with other proteins.
Isotype	IgG
Form	Liquid
Concentration	1 mg/ml
Purification	The antibody was affinity-purified from rabbit antiserum by affinity-chromatography using epitope-specific immunogen and the purity is > 95% (by SDS-PAGE).
Suggested Dilutions	WB: 1:500-1:2000 IHC: 1:50-1:200

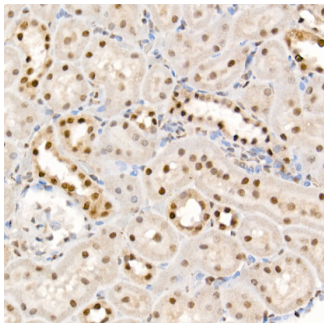
## Anti-4E-BP1 (phospho-T36) EIF4EBP1 Antibody (A00968T36) Images



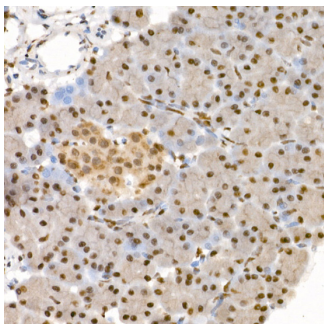
Western blot analysis of extracts of various cell lines, using Phospho-eIF4EBP1-T37/46 antibody at 1:1000 dilution. HeLa cells were treated by IGF-1 at 37°C for 30 minutes after serum-starvation overnight. NIH/3T3 cells were treated by PDGF at 37°C for 30 minutes after serum-starvation overnight. Secondary antibody: HRP Goat Anti-Rabbit IgG at 1:10000 dilution. Lysates/proteins: 25ug per lane. Blocking buffer: 3% nonfat dry milk in TBST. Detection: ECL Enhanced Kit. Exposure time: 30s.



Western blot analysis of extracts of C6 cells, using Phospho-eIF4EBP1-T37/46 antibody at 1:1000 dilution. C6 cells were treated by PDGF at 37°C for 30 minutes after serum-starvation overnight. Secondary antibody: HRP Goat Anti-Rabbit IgG at 1:10000 dilution. Lysates/proteins: 25ug per lane. Blocking buffer: 3% nonfat dry milk in TBST. Detection: ECL Enhanced Kit. Exposure time: 180s.



Immunohistochemistry of paraffin-embedded rat kidney using Phospho-eIF4EBP1-T37/46 Rabbit pAb at dilution of 1:100. Perform high pressure antigen retrieval with 10 mM citrate buffer pH 6.0 before commencing with IHC staining protocol.



Immunohistochemistry of paraffin-embedded rat pancreas using Phospho-eIF4EBP1-T37/46 Rabbit pAb at dilution of 1:100. Perform high pressure antigen retrieval with 10 mM citrate buffer pH 6.0 before commencing with IHC staining protocol.

**Submit a product review to Biocompare.com**

Submit a review of this product to Biocompare.com to receive a \$20 Amazon.com giftcard! Your reviews help your fellow scientists make the right decisions. Thank you for your contribution.



Anti-4E-BP1 (phospho-T36) EIF4EBP1 Antibody

For Research Use Only. Not for use in diagnostic procedures.