

## Anti-4E-BP1 (phospho-T37) EIF4EBP1 Antibody

Catalog Number: A00968T37

### Overview

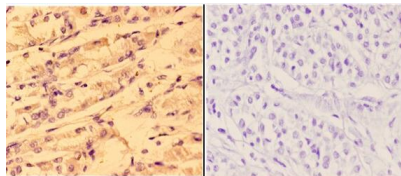
Product Name	Anti-4E-BP1 (phospho-T37) EIF4EBP1 Antibody
Reactive Species	Human, Mouse, Rat
Description	Boster Bio Anti-4E-BP1 (phospho-T37) EIF4EBP1 Antibody catalog # A00968T37. Tested in IHC applications. This antibody reacts with Human, Mouse, Rat.
Application	IHC
Clonality	Polyclonal
Formulation	Rabbit IgG, 1mg/ml in PBS with 0.02% sodium azide, 50% glycerol, pH7.2
Storage Instructions	Store at -20°C for one year. For short term storage and frequent use, store at 4°C for up to one month. Avoid repeated freeze-thaw cycles.
Host	Rabbit
Uniprot ID	Q13541

### Technical Details

Immunogen	Synthetic phosphopeptide derived from human 4E-BP1 around the phosphorylation site of Threonine 37.
Cross Reactivity	No cross reactivity with other proteins.
Isotype	IgG
Form	Liquid
Concentration	1 mg/ml
Purification	The antibody was affinity-purified from rabbit antiserum by affinity-chromatography using epitope-specific immunogen and the purity is > 95% (by SDS-PAGE).
Suggested Dilutions	IHC: 1:50-1:200

## Anti-4E-BP1 (phospho-T37) EIF4EBP1 Antibody (A00968T37) Images

---



Immunohistochemistry (IHC) analyzes of 4E-BP1 (phospho-T37) pAb in paraffin-embedded human stomach carcinoma tissue at 1:50, showing cytoplasmic and nuclear staining. Negative control (the right) Using PBS instead of primary antibody, secondary antibody is Goat Anti-Rabbit IgG-biotin followed by avidin-peroxidase.

## Submit a product review to Biocompare.com

---

Submit a review of this product to Biocompare.com to receive a \$20 Amazon.com giftcard! Your reviews help your fellow scientists make the right decisions. Thank you for your contribution.



Anti-4E-BP1 (phospho-T37) EIF4EBP1 Antibody

For Research Use Only. Not for use in diagnostic procedures.